

Hanex
Solid
Surfaces

2025/26
ELEVATE LIFE

Hanex
Solid
Surfaces

HYUNDAI
L & C

HYUNDAI L&C EUROPE GmbH

Düsseldorfer Str.13, 65760 Eschborn, Germany

+49 619 6586 9023

info@hyundailnc.eu

hyundailnc.eu

HYUNDAI
L & C

COMPANY

Pioneering the value of spaces, we are advancing as a Global Leader in Building Materials for Interiors.

Based on our unique high-value-added technological expertise that we have managed to amass over half a century, Hyundai L&C has successfully established collaborative relationships with partners on both the domestic and international stage, firmly positioning itself as a "Global Leader in Building Materials".

It runs the business of various building materials including high-class interior stones and various surface finishing materials based on eco friendly interior film manufacturing technology, trendy style wall papers and flooring materials, and up to windows & doors of grade 1 energy saving technology.

Through relentless efforts to develop new technologies and innovative products, we will provide valuable solutions with solid quality assurance that suits our clients' needs.

2018.12 Incorporated Hyundai Department Store Group	Since 1965
specializing in comprehensive building materials	Sales in 81 Countries 5 Overseas sales corporations

Business Portfolio

	Interior Stone • Hanstone Quartz • Hanex Solid Surfaces
	Window • PVC Window • Window System • Aluminum Window • Inner Gate • Home Door • System Furniture
	High-Functional Films • Interior Film • DIY Tile, Pannel • Decorative Film • Exterior Film • Waterproof Sheet • Rigid Film
	Flooring / Wallpaper • Vinyl Sheet • Wood Flooring • LVT, VCT • Wallpaper • Wallcovering Board

Hyundai Department Store Group

We are committed to becoming a company with the highest level of customer trust.

Ever since its establishment in 1971, Hyundai Department Store Group has evolved to provide a comprehensive lifestyle and culture, by expanding its business areas to include distribution, fashion, food, living, digital, IT, rentals, travel and selective welfare, construction, bio, health, and beauty products. Going forward, the Hyundai Department Store Group will boost its competitive power in each business area and will actively seek to enter business fields with high growth potential in the future.

Comprehensive lifestyle and culture company

More than
50 Years of History



Since in 1971



14 Affiliates
in Diversified Industries



21st
Domestic Business rankings

Business areas of Group

Distribution • Hyundai Department-Store • Hyundai Department-Store Duty Free • Hyundai Home Shopping	Total Living • Hyundai L&C • Hyundai Livart • ZINUS	Travel · Welfare • Hyundai Dream Tour • Hyundai Ezwel	Food Hyundai Green Food Bio-Health Hyundai Bioland
	Digital-IT Hyundai Futurenet	Fashion-Beauty Handsome	Construction Hyundai Everdigm

The HYUNDAI Family

On Resolve and the Spirit of Adventure.

Initial Founder of HYUNDAI Group
Chung Ju-yung
1915~2001

 Automobile, Steel Construction, Finance Automobile parts	 Retail, Fashion, Food, Total living Travel, Bio, Digital IT	 Lifts, logistics automation Management consulting, Renewable energy
 Shipbuilding & Offshore, Naval & Special Ship, Engine & Machinery	 Marine & Fire Insurance, Asset management	 Mobility, Construction Education & Culture
 Holdings, Casting, Battery, Solite	 Real estate development construction, Intelligent B/D	 Construction, Glass, Silicon, Leisure

Durable Beauty, Unmatched Stability | Hanex

Hanex offers exceptional stability and waterproof properties, ensuring it does not warp due to moisture. It maintains its original shape and beauty even under harsh conditions, making it an ideal choice for interior finishes in commercial spaces and kitchen countertops.



Contents

Color Index	06-07
Reference	08-09
Sinks & Basins	10
Technical Information	11

Vein



CC-001 Cascade Ice



VM-001 Venato Sparkle



CC-002 Cascade Cream



VM-002 Venato Snow



CC-007 Cascade Cloud



VM-003 Venato Blanc



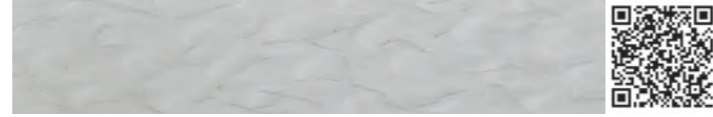
CC-005 Cascade White



VM-004 Venato Champagne



BL-302 Linen White



VM-005 Venato Stella



CC-008 Cascade Wave



ST-101 Clara



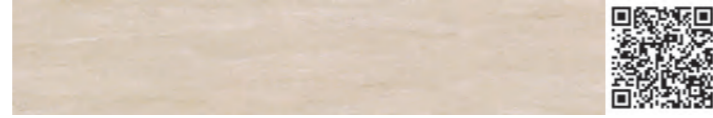
CC-009 Cascade Haze



ST-102 Marelinho



CC-003 Cascade Grey



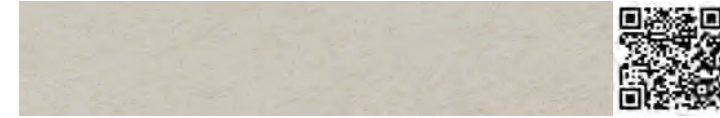
ST-201 Romano



CC-010 Cascade Pure Grey



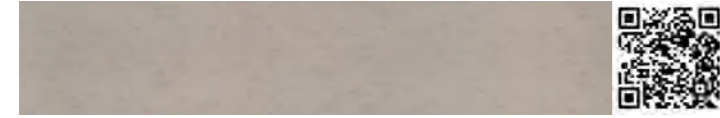
ST-103 Nublado



CC-004 Cascade Beige



ST-303 Volare



CS-402 Sand Concrete



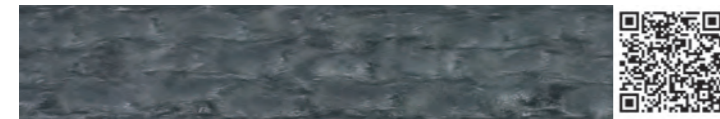
BL-201 Kashmere



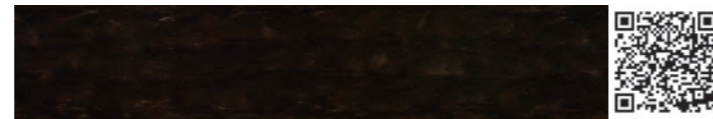
CC-006 Cascade Black



BL-256 Mountain Frost



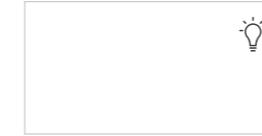
BL-206 Slate Grey



BL-209 Macassar

Colors

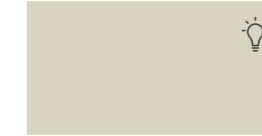
Solid



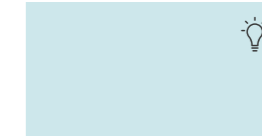
S-008 N-White



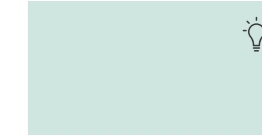
S-001 R-White



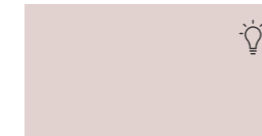
S-004 Ivory



S-014 Aqueous



S-026 Menta Green



S-025 Cherry Blossom



M-015 Matcha



M-006 N-Yellow



M-005 N-Orange



M-003 Red



S-006 Grey



S-022 Steel



M-014 Grey Ash



M-009 Charcoal Sketch



M-007 Black



M-012 Marine Blue

Chip



P-004 Solaris



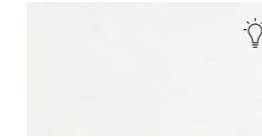
T-021 Pure Arctic



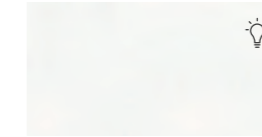
D-048 Crystal Mirror



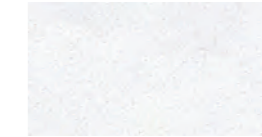
GAM-001 After Snow



D-217 Crisp Snow



D-024 Silver White



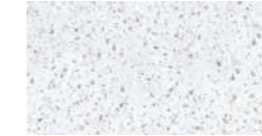
B-031 Helsinki



T-089 Vocalise



D-001 Silver Stone



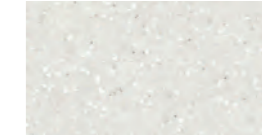
B-012 Oslo White



D-047 Cream Cheese



T-012 H-Elegance



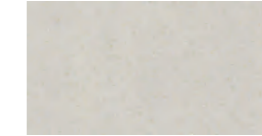
T-050 Ice Queen



GAD-001 Athena



T-500 Toffee Crunch



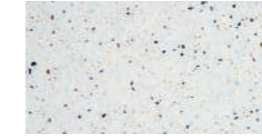
D-101 Nantucket



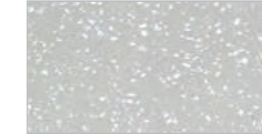
CT-004 Cotton Concrete



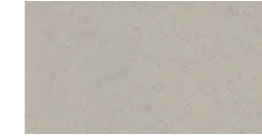
P-002 Metal Grey



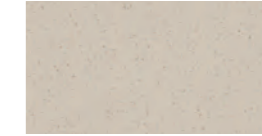
RE-07 D-Terrazzo



RE-08 Urban Shard



T-206 Charles Rose



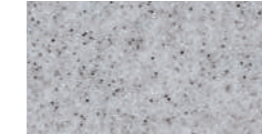
T-223 L-Cubic



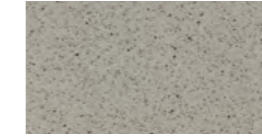
T-102 Hidden Glen



CT-005 Mystic Concrete



D-007 Mist



GAD-007 Juno



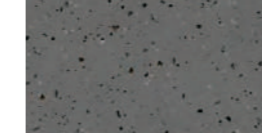
T-511 Aria



GAD-005 Helena



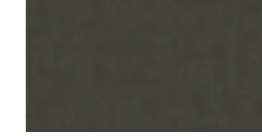
CT-002 Modern Concrete



CT-003 Smoky Concrete



T-509 Harvest



T-510 Haramis



D-013 Night Light



D-028 Black Beat



P-005 Night Gleam



RE-06 Cacao Umber



T-518 Starry Night



B-040 Copper Black

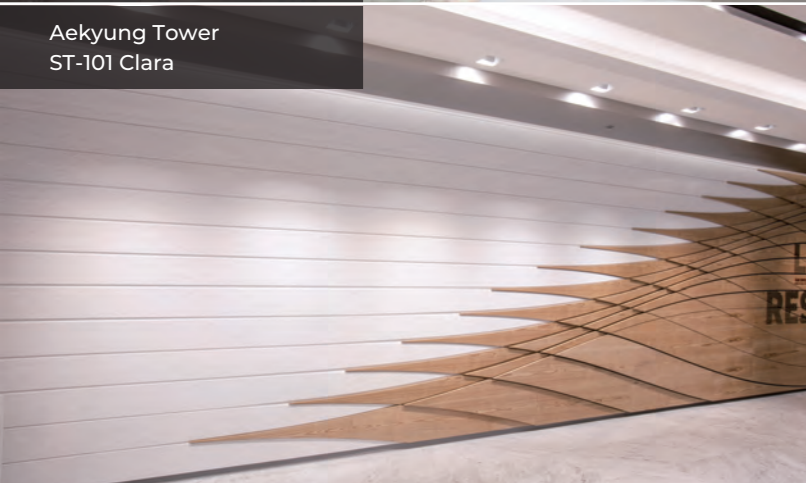
There may be slight variations in color between the printed material and the sample. For more information, please visit www.hanex.com.

💡 BACKLIGHTING: Certain colors exhibit higher translucency when exposed to light sources.

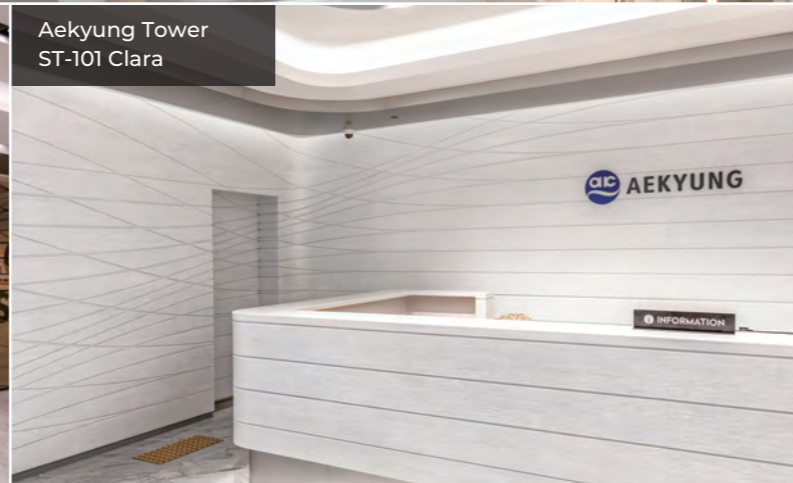
Reference



The Hyundai Seoul
by Richard George Rogers
S-008 N-White



Aekyung Tower
ST-101 Clara



Aekyung Tower
ST-101 Clara



Incheon International Airport
S-008 N-White



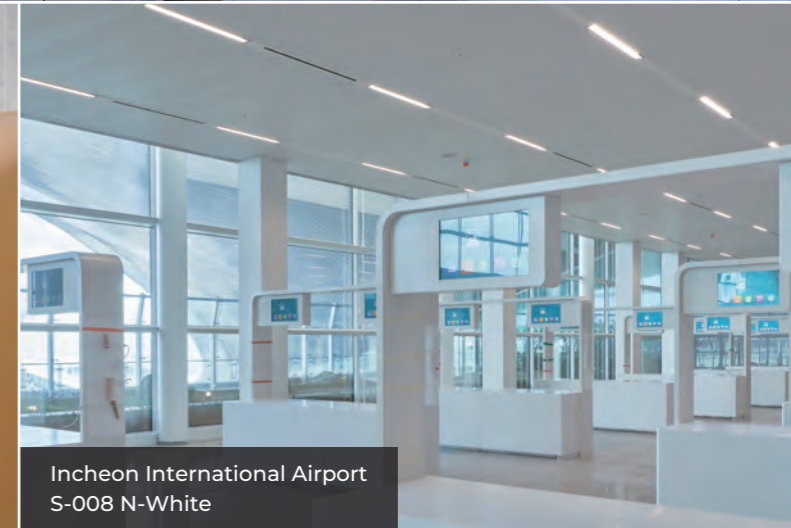
Hyundai Department Store
CS-402 Sand Concrete



The Hyundai Seoul
by Richard George Rogers
S-008 N-White



Incheon International Airport
D-047 Cream Cheese



Incheon International Airport
S-008 N-White



Incheon International Airport
S-008 N-White

Sinks and Basins

Hanex provides a range of premium sinks and vanity bowls. Engineered for seamless integration, easy maintenance, and effortless cleaning, they enhance countertops with sophistication.



※ Detailed drawings of the sink bowls are accessible via the QR code

Technical Information

Certification

Hanex is highly regarded in the market for its eco-friendly materials and holds various environmental certifications, including NSF, Greenguard, and SCS.



Composition And Information On Ingredients

Component	CAS	%
Polymethylmethacrylate	8011-14-7	>30
Alumina Trihydrate	21645-51-2	<70
Methylmethacrylate (Degradation Product)	80-62-6	<1

* Request for available color for exterior cladding

Technical Specification

Specification	Result	Test Method
Specific Gravity	1.7	ASTM D792-08
Rockwell Hardness	90	ASTM D785-08
Tensile Strength	43.8 Mpa	ASTM D638-10
Tensile Modulus of Elasticity	12.6 Gpa	ASTM D638-10
Flexural Strength	58.8 Mpa	ASTM D790-10
Flexural Modulus of Elasticity	10.6 GPa	ASTM D790-10
Izod Impact Strength	16 J/m	ASTM D256-10
Water Absorption	0.036 % (24h Immersion)	ASTM D570-98
Density	1.7 g/cm ²	ASTM D792-08
Heat Resistance Test	No Defects	JIS K 6902 : 2008
Hot Water Resistance Test	No Defects	JIS K 6902 : 2008
Deflection Temperature Under (1.82MPa)	115 oC	ASTM D648-07
Thermal Expansion	3.93 x 10 ⁻⁵ 1/oC	JIS K 6911 : 2006
Compressive Strength	118 Mpa	ISO 604 : 2002
Light Resistance	No Effect	NEMA LD3 3.03
Boiling Water	No Effect	NEMA LD3 3.05
Ball Impact Resistance	No Fracture on 3 Impacts	NEMA LD3 3.08
Resistance to Impact by Large Diameter Ball	Max Impact Height : 2m	ISO 4586-2
Point Impact Resistance	No Cracks or Chips	ANSI Z124.3 4.3
Stain Resistance Test	Pass	ANSI Z124.3 5.2
Wear and Cleanability Test	Pass	ANSI Z124.3 5.3
Cigarette Test	Pass	ANSI Z124.3 5.4
European Railway Standard for Fire Safety	R1, HL3	EN 45545
Resistance to Bacteria	No Growth	ASTM G22
Resistance to Fungi	No Growth	ASTM G21
European Classification Standard	B-s1, d0	EN 13501-1
Fa ₀ ade Panel	ETA (European Technical Assessment)	DIBT
Weatherability (1,000 Hr) - Special Color Only	No Visual Change	ASTM G155