

SIBU | DESIGN

SIBU
world

02/2026

We create ambience.

WE CREATE AMBIENCE.

With our art of laminating, we unite beauty and function by combining different materials. Always customer-oriented and flexible, we manufacture design elements of outstanding quality and thus ensure unique spatial experiences.



ABOUT US

SIBU DESIGN GmbH

Founded in 1985 / 45 employees / more than 190 decors in stock

SIBU DESIGN is a leading manufacturer of high-quality wall panels for interior applications, such as interior design for shops, hotels, restaurants, for furniture production as well as display and architectural useage.

SIBU DESIGN convinces with trendy decors, high-quality processing as well as short delivery times and offers high flexibility for just-in-time projects.

Sustainability always comes first: from the strict selection of raw materials to the most modern manufacturing processes and reliable delivery logistics.

SIBU DESIGN produces exclusively in Austria and guarantees 100% PVC-free surfaces.



SIBU DESIGN UNITES DESIGN AND FUNCTION

We directly integrate emerging trends into our product development.

We combine these trends with functional properties in order to meet not only the visual but also the technical requirements of our customers:

- Longevity due to a particularly high abrasion resistance*
- Easy processing with standard tools*
- Time-saving installation due to lightweight materials and large formats*
- Compliance with regulatory requirements such as moisture or fire resistance*
- Fast availability due to a large stock program and optimized processes*
- Best service with local production and committed employees*
- Easy installation on the construction site by delivering: cut to size, equipped with a self-adhesive reverse side, punched, rolled, shaped or pressed on MDF / HDF / etc.*

We also manufacture individual, customer-specific designs and have our own mold construction, CNC milling, punching, a large network of suppliers and always strive to create ambience.



PRODUCT GROUPS

NATURE-LINE

STRUCTURE-LINE (SL)

DECO-LINE (DECORATION)

DECO-LINE (DISPLAY)

MULTISTYLE (MS)

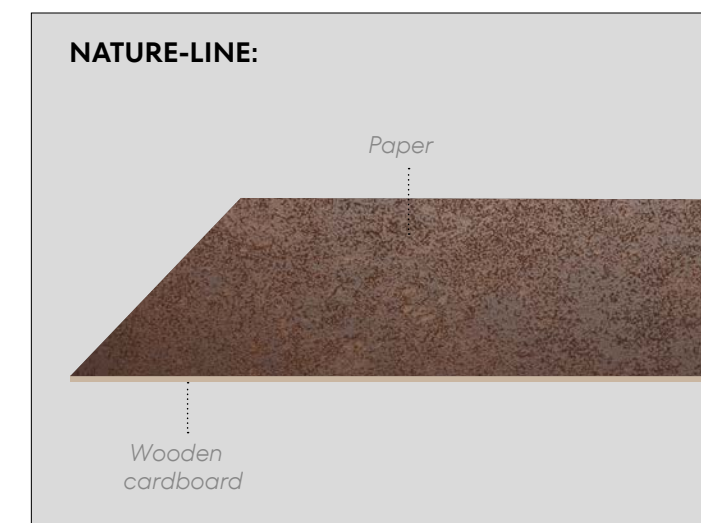
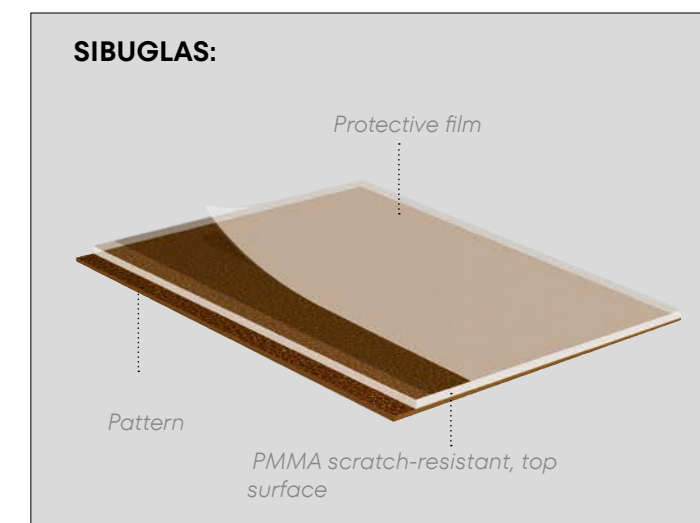
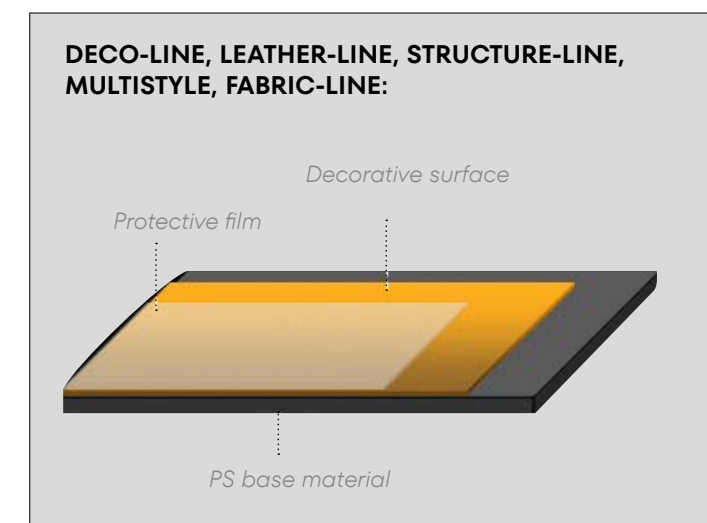
FABRIC-LINE (FL)

LEATHER-LINE (LL)

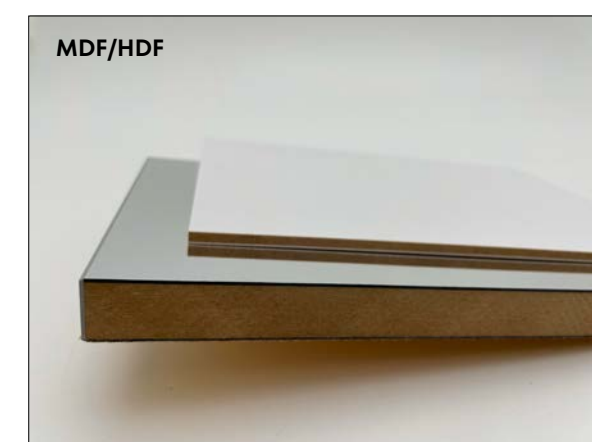
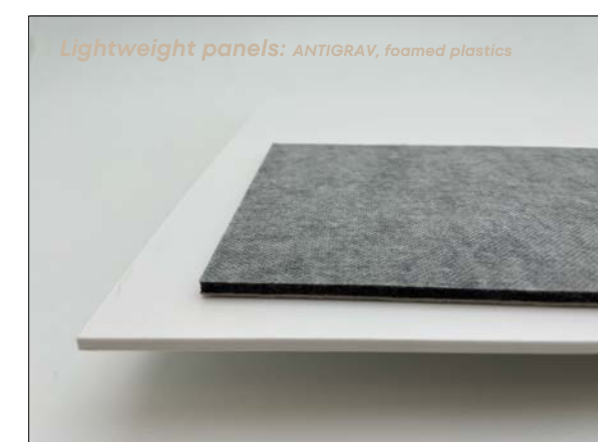
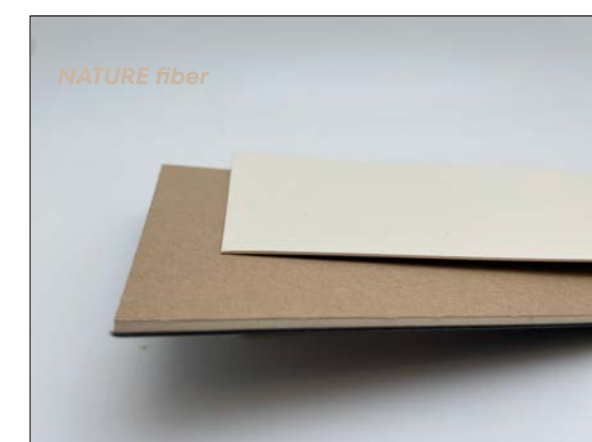
SIBUGLAS (SG)

ACOUSTIC WALL PANELS (AP)

PRODUCT STRUCTURE

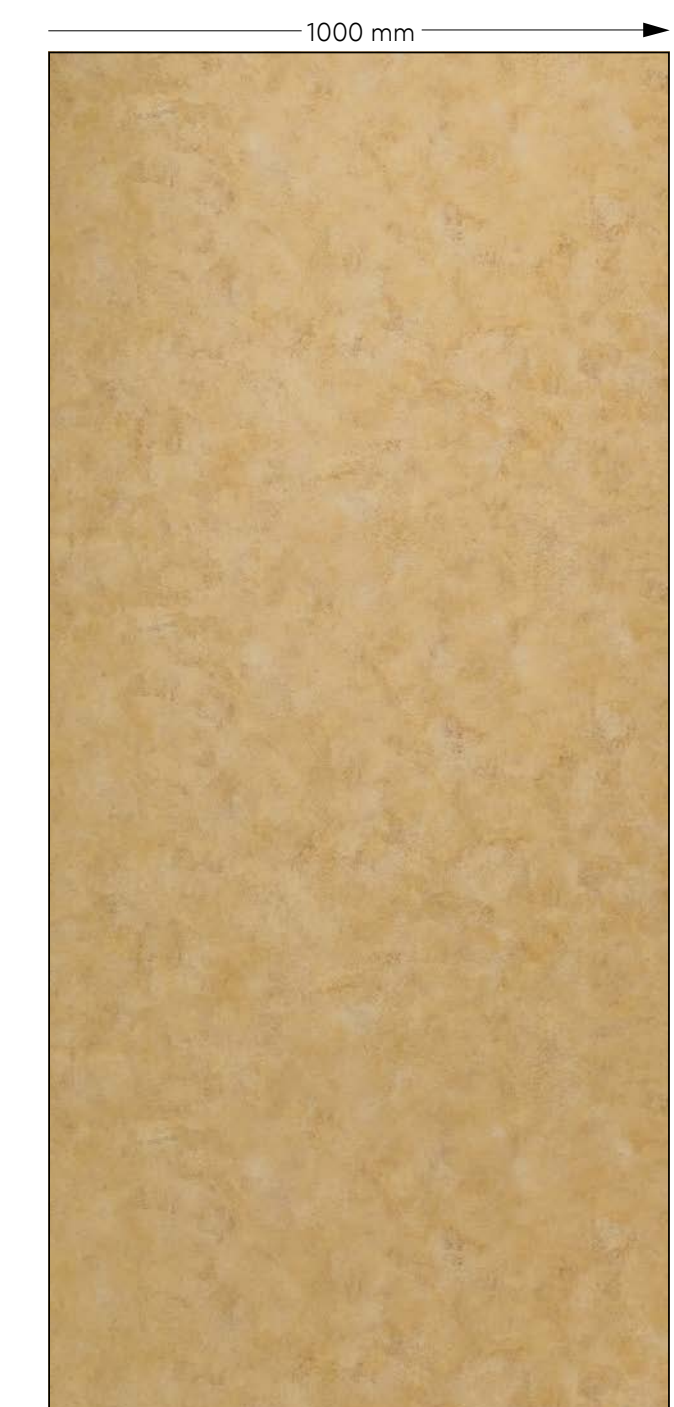


CARRIER POSSIBILITIES



Mögliche Ausführungen der Träger: Magnetisch, Alu-Verbund, Sperrholz, HPL/CPL, ...
Possible versions of the carriers: Magnetic, aluminium composite, plywood, HPL/CPL, ...

DIMENSIONS

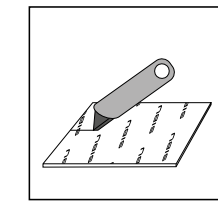


Standard stock programme: Dimensions: 2,600 x 1,000mm

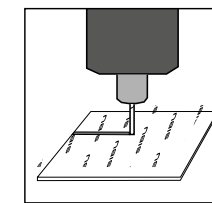


Format production and cut-to-size products possible

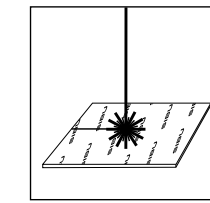
PROCESSING POSSIBILITIES



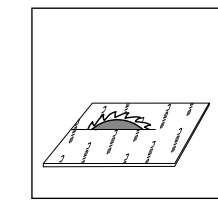
Cutting



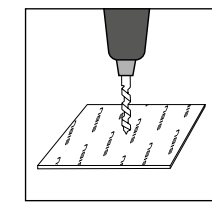
Milling



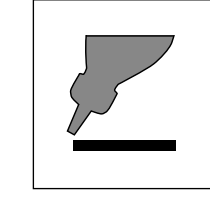
Laser cutting



Sawing



Drilling

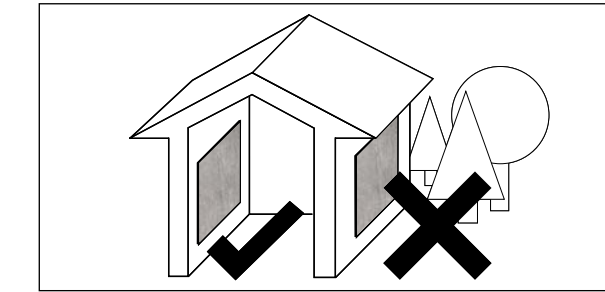


Press bonding (PVA pretreatment)

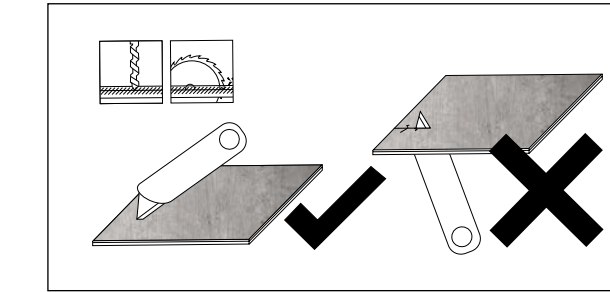
More detailed information can be found in our SIBU OVERVIEW and under: www.sibu.at/en/service/processing-information



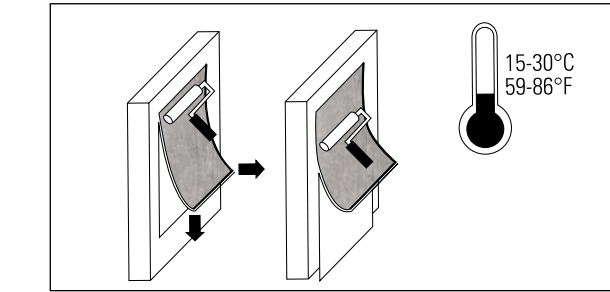
PROCESSING INFORMATION



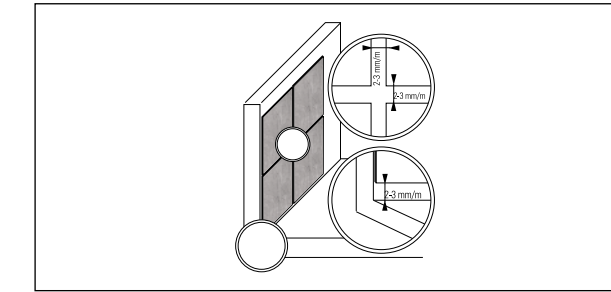
Only for interior application



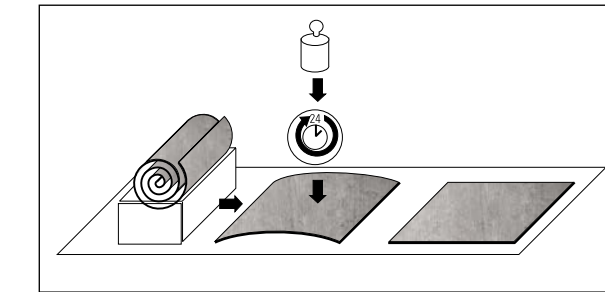
Processing of the design panel always from the top side



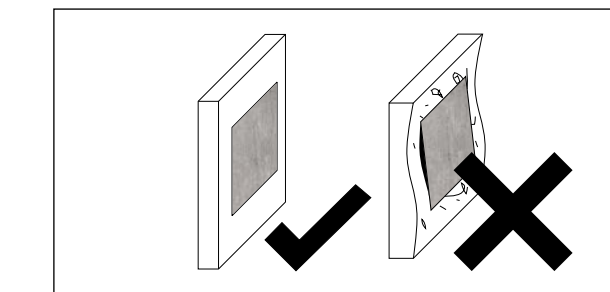
The design sheets should be acclimatized



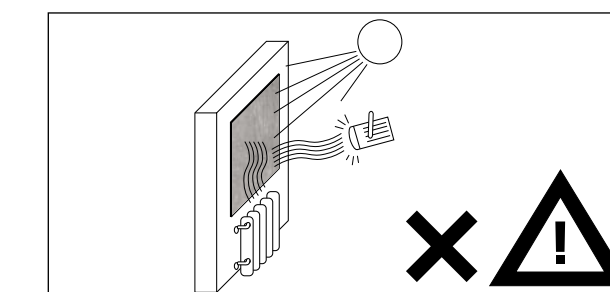
As a rule, an approx. 2-3 mm expansion joint is to be left along the sheet edges!



Patterned sheets delivered in rolled form should be kept flat for a minimum of 24 hours. Weighting down improves evenness.



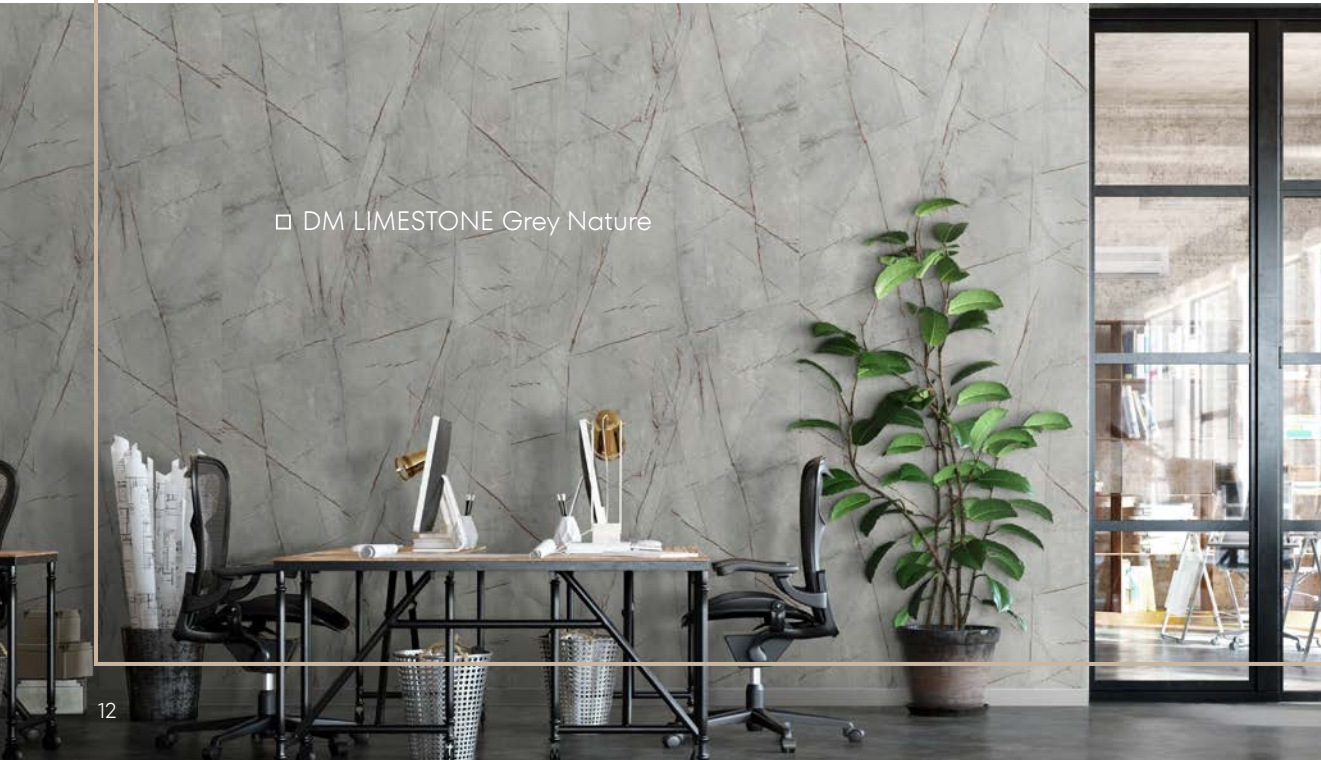
The surface should be dry and flat, free from loose parts, dust, dirt, grease, wax and silicone.



Not recommended for use near open fires or strong heat sources.



□ WL Sunwood Nature

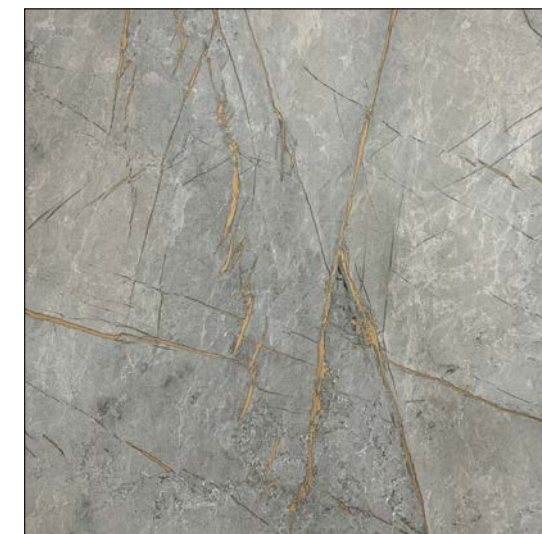


□ DM Limestone Grey Nature

NATURE- LINE



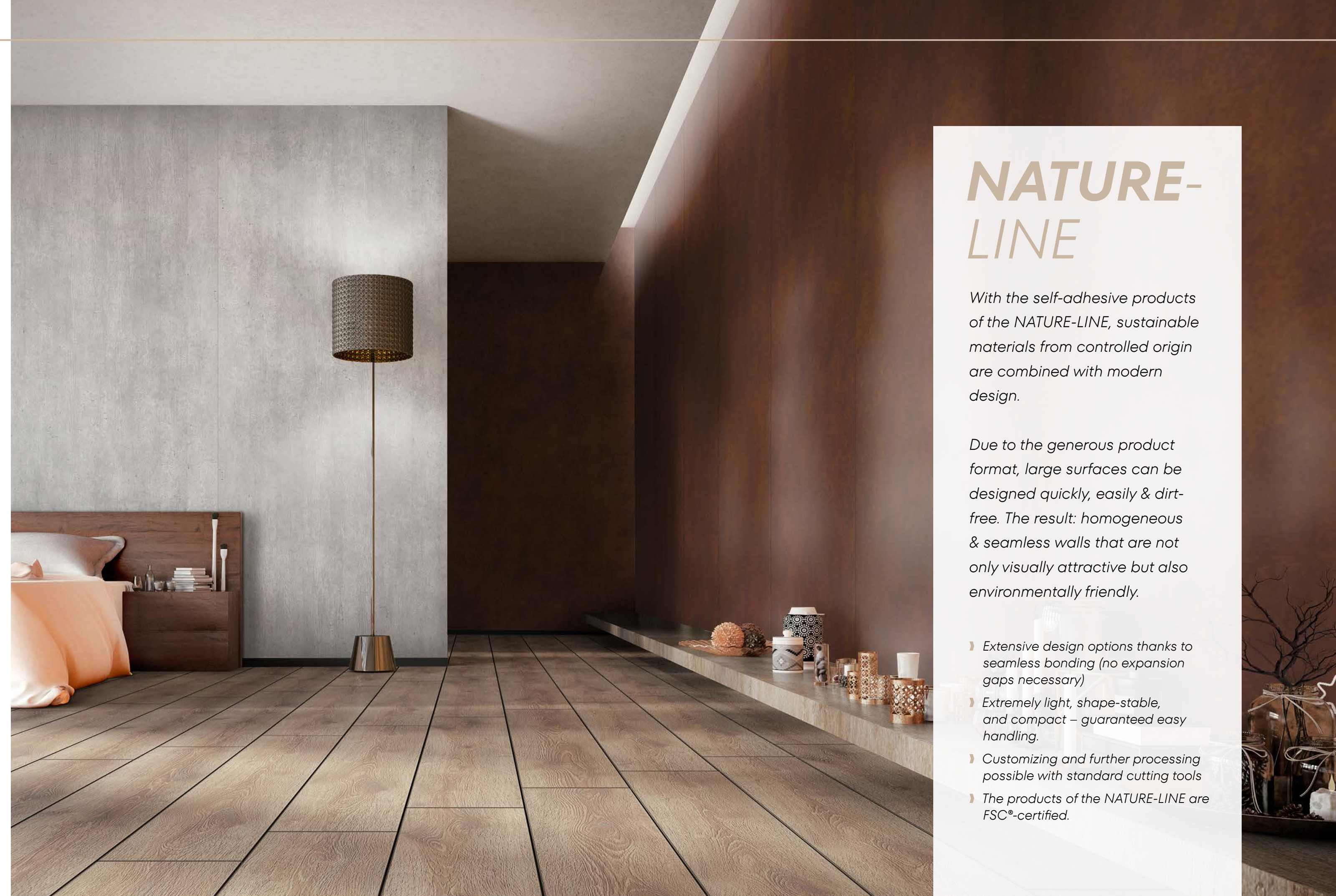
The mark of
responsible forestry
FSC® C172111



DM Limestone Grey Nature SA



DM Corten Nature SA



NATURE- LINE

With the self-adhesive products of the NATURE-LINE, sustainable materials from controlled origin are combined with modern design.

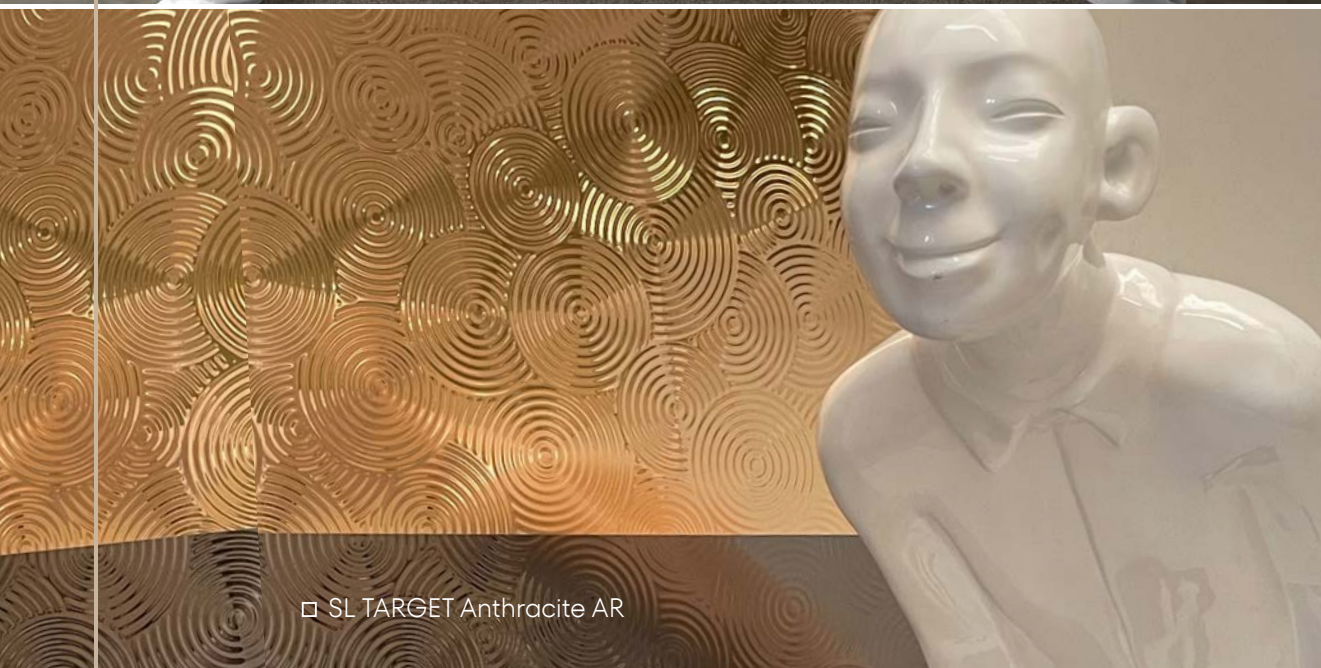
Due to the generous product format, large surfaces can be designed quickly, easily & dirt-free. The result: homogeneous & seamless walls that are not only visually attractive but also environmentally friendly.

- ▮ Extensive design options thanks to seamless bonding (no expansion gaps necessary)
- ▮ Extremely light, shape-stable, and compact – guaranteed easy handling.
- ▮ Customizing and further processing possible with standard cutting tools
- ▮ The products of the NATURE-LINE are FSC®-certified.

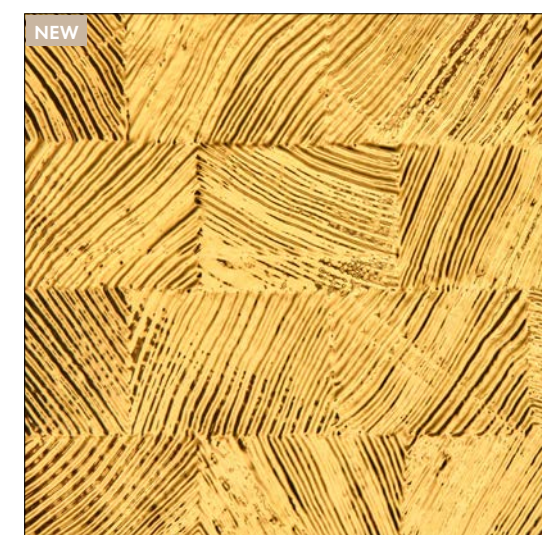
STRUCTURE-LINE



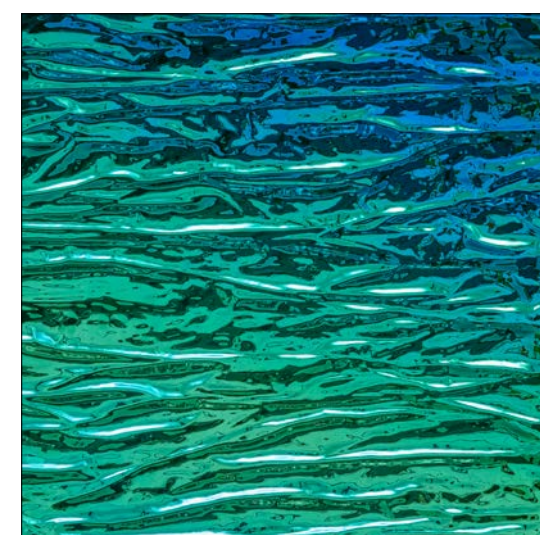
□ SL LOTUS CLASSY Black



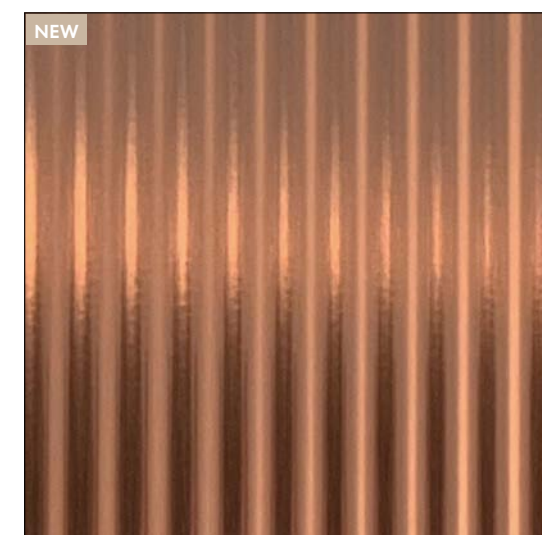
□ SL TARGET Anthracite AR



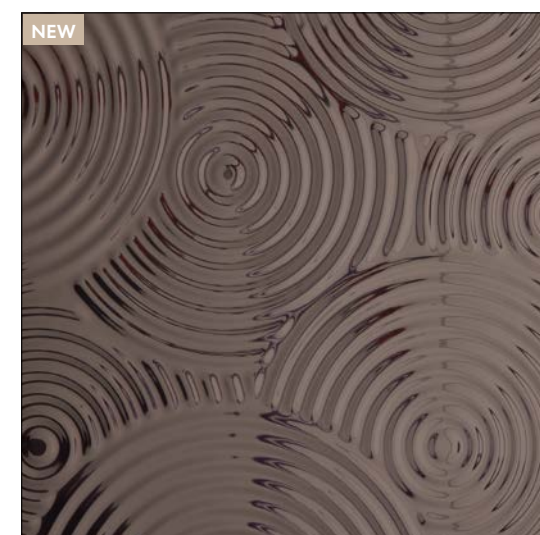
NEW
SL GRAIN Gold



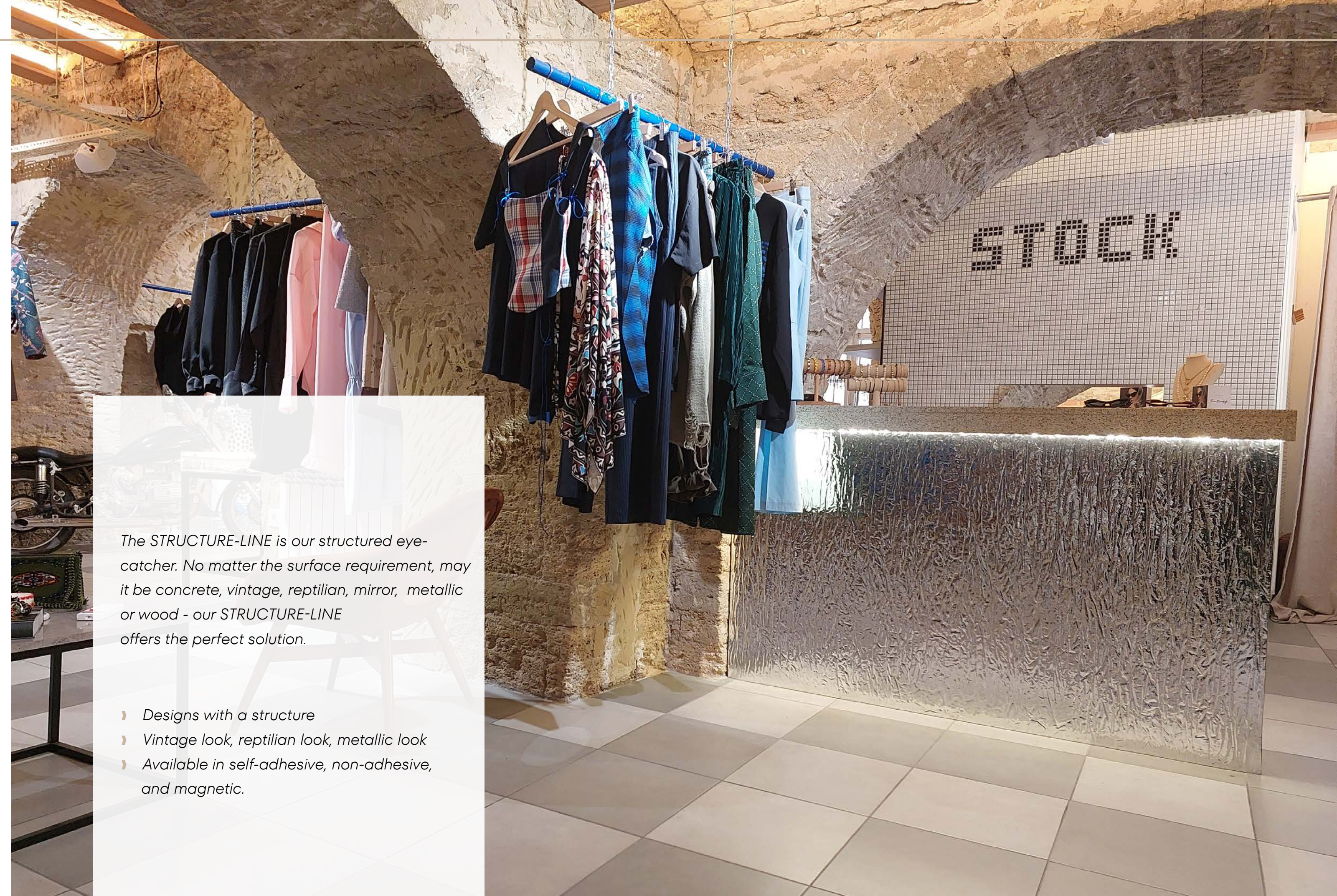
SL CRASHED Aqua



NEW
SL WAVE 12 Copper brushed AR



NEW
SL TARGET Anthracite AR



The *STRUCTURE-LINE* is our structured eye-catcher. No matter the surface requirement, may it be concrete, vintage, reptilian, mirror, metallic or wood - our *STRUCTURE-LINE* offers the perfect solution.

- › Designs with a structure
- › Vintage look, reptilian look, metallic look
- › Available in self-adhesive, non-adhesive, and magnetic.



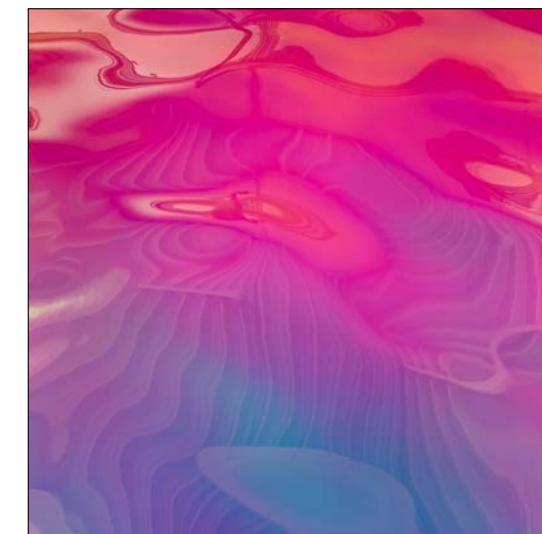
STRUCTURE-LINE SL OCEAN



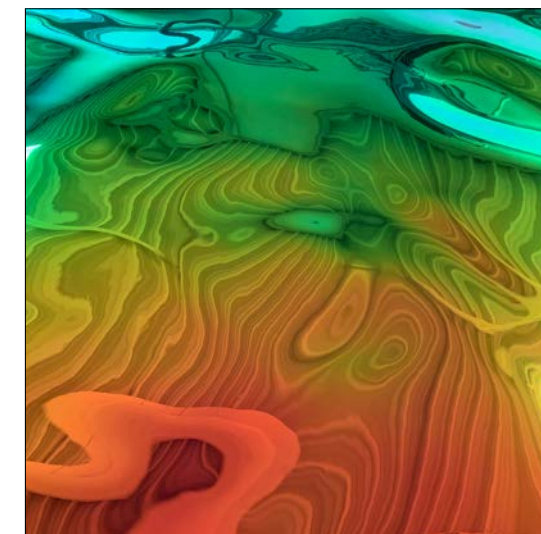
SL OCEAN Silver



SL OCEAN Anthracite AR



SL OCEAN Hollywood Blue



SL OCEAN Rainbow

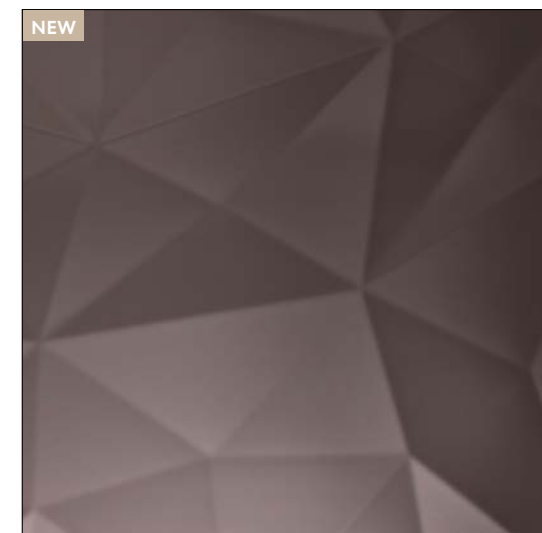


STRUCTURE-LINE SL OCEAN

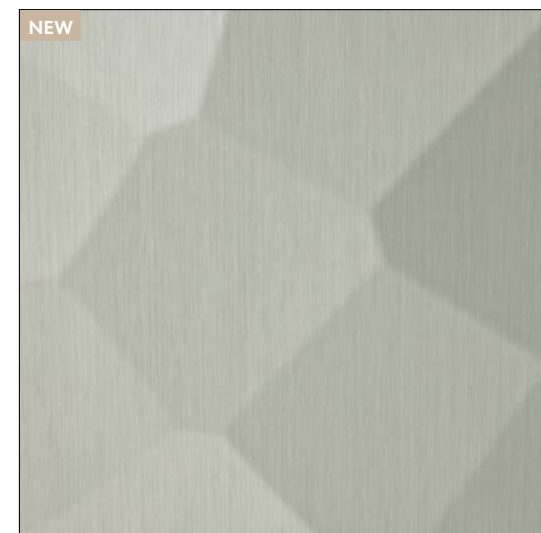
The product group STRUCTURE-LINE offers another highlight: SL OCEAN in exciting colours. The decor lives up to its name and, in addition to its untamed wavy structure, impresses with a mirrored surface that creates special light and colour effects.



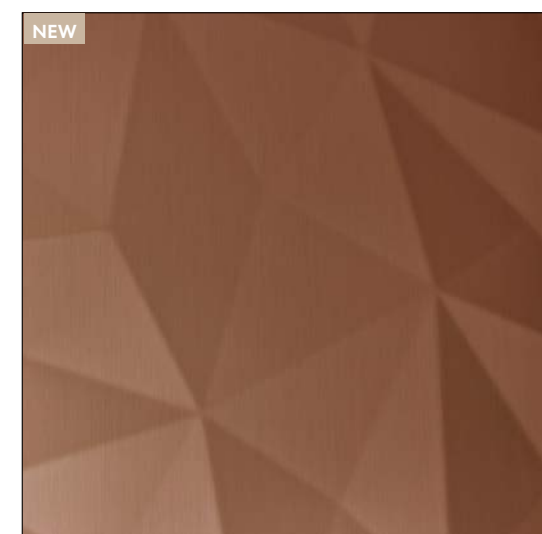
SL FACET / SL DIAMOND / SL PILLAR
**NEW IN THE
 STRUCTURE-LINE**



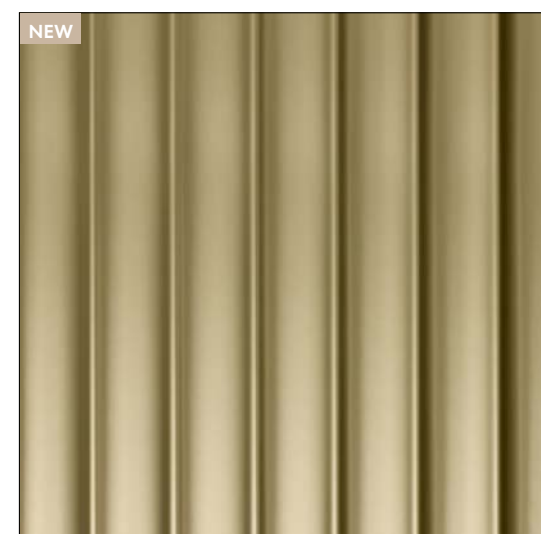
SL DIAMOND Anthracite AR



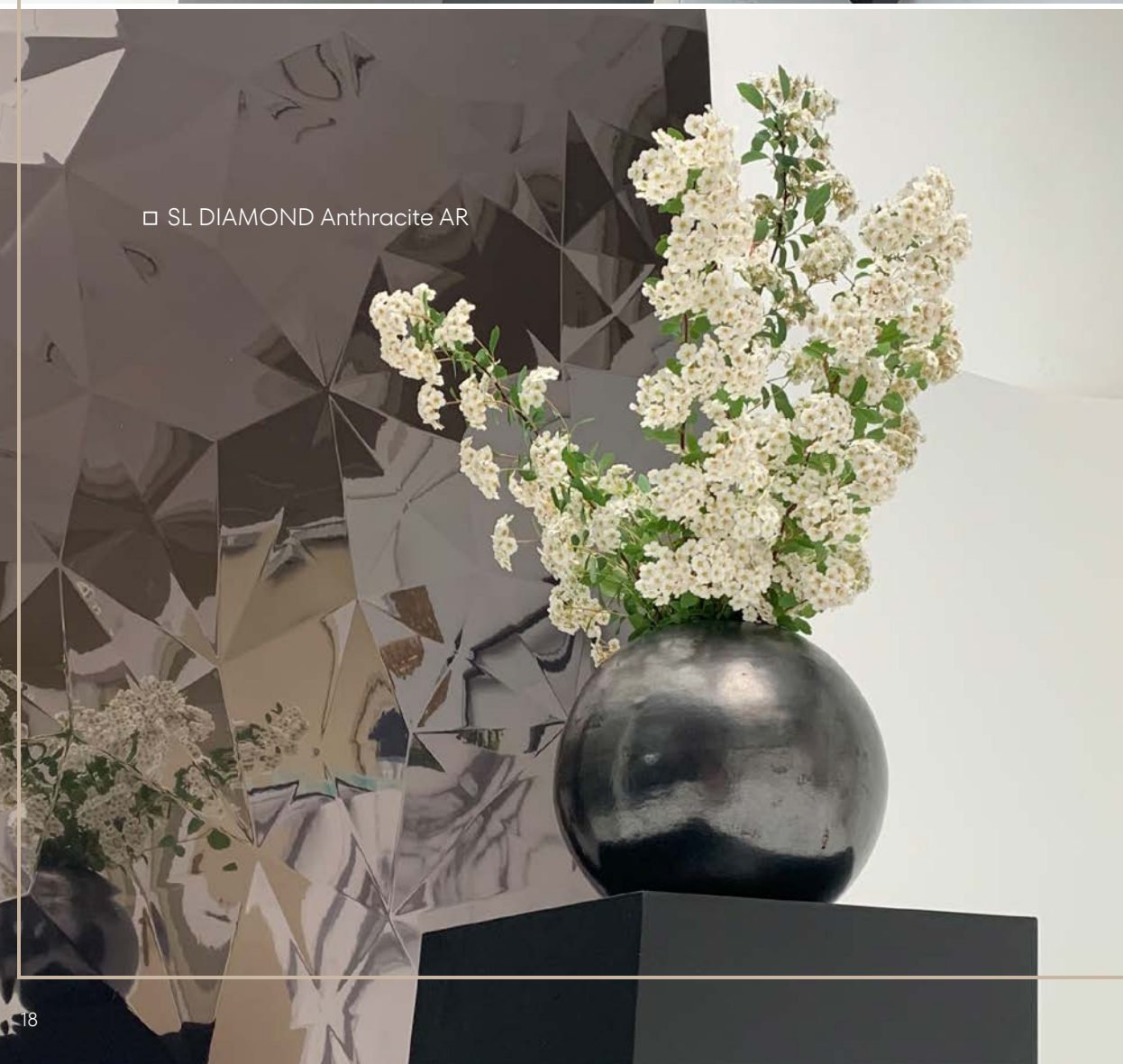
SL FACET Green Steel brushed AR



SL DIAMOND Copper brushed AR



SL PILLAR Fashion Gold AR



SL FACET /
 SL DIAMOND /
 SL PILLAR

*Radiant elegance for standout accents!
 Available in classic mirror shades and
 exclusive brushed styles, the new structures add
 stylish shine to any project. Ideal
 for design lovers seeking innovation and
 aesthetics.*



DM CONCRETE Grey



WL Carbonized Wood

DECO-LINE DECORATION



WL Carbonized Wood



DM OXIDIZED Copper

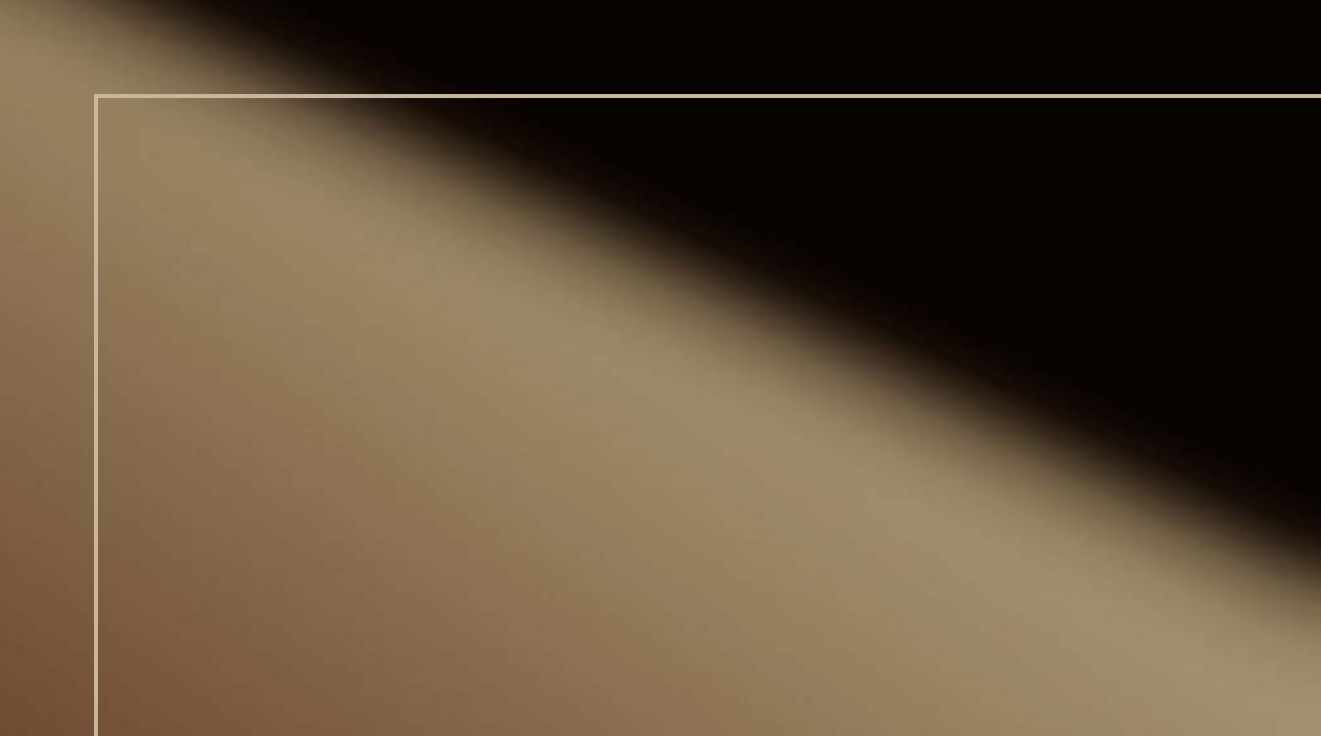
DECO-LINE

The DECO-LINE DECORATION product range offers a diverse selection of decorative surfaces, ranging from metallic and vintage-inspired designs to vibrant wood textures, as well as elegant ceramic and stone finishes.

In addition, DECO-LINE products are also available with abrasion-resistant surfaces.

- › Metal and wood looks
- › Fashionable designs and colours
- › Problem-free printing
- › Many products supplied in a flame-retardant version
- › Available in self-adhesive, non-adhesive, and magnetic.

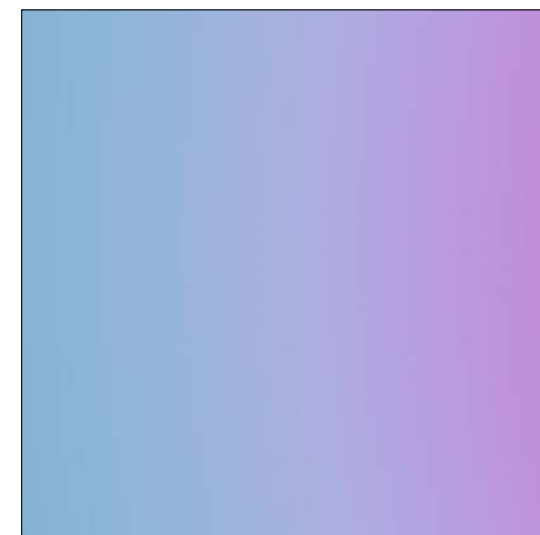




DECO-LINE DISPLAY



DM Brass brushed matt AR



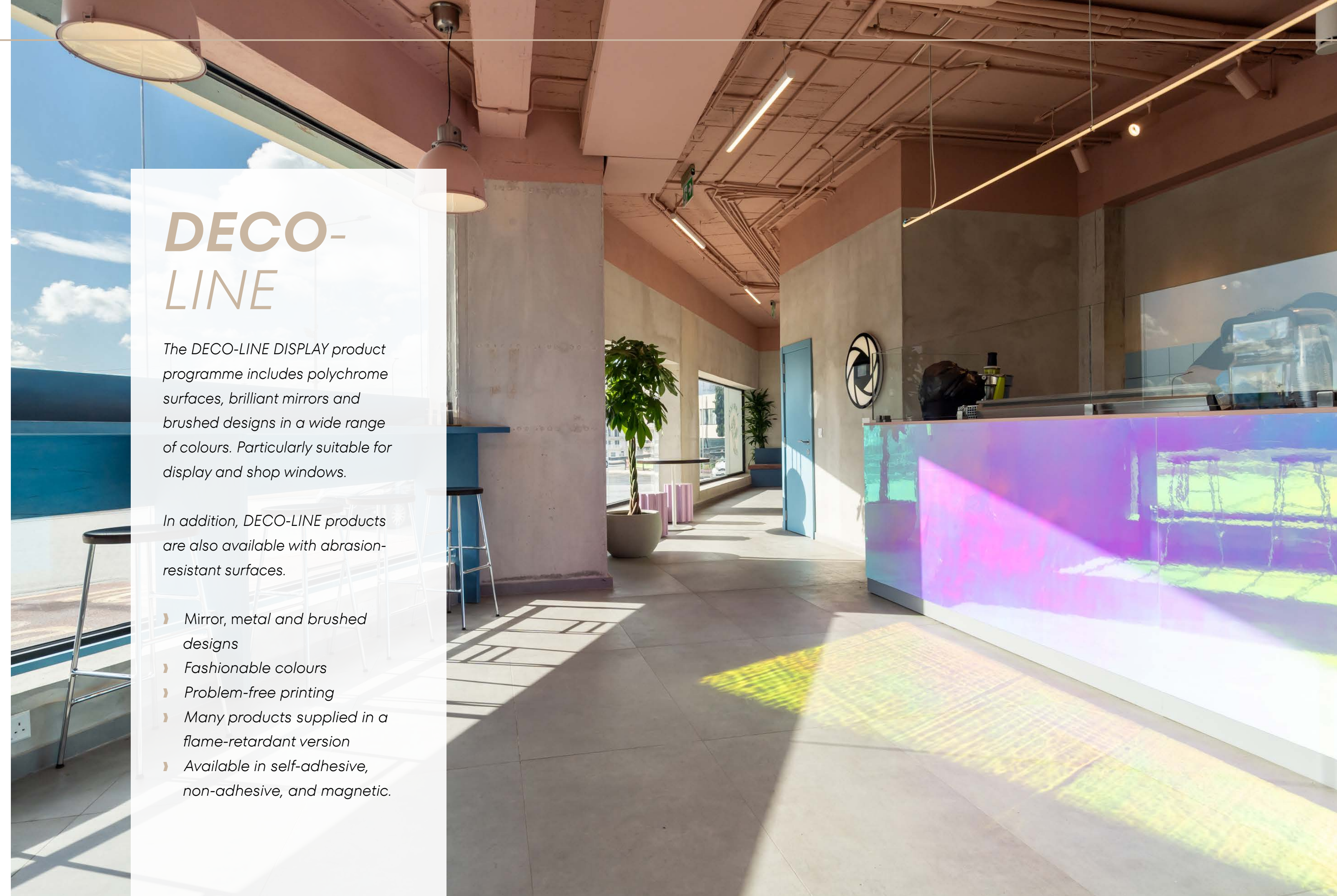
DM Hollywood Blue

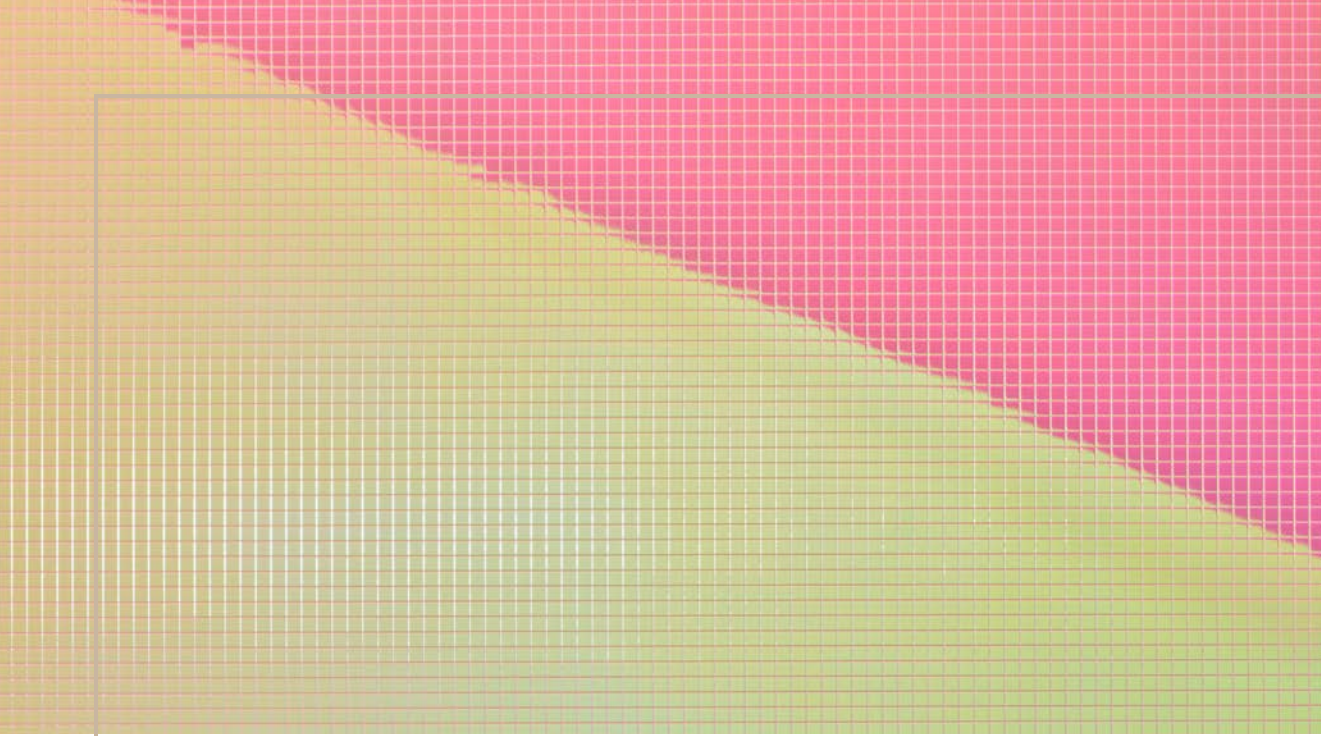
DECO-LINE

The DECO-LINE DISPLAY product programme includes polychrome surfaces, brilliant mirrors and brushed designs in a wide range of colours. Particularly suitable for display and shop windows.

In addition, DECO-LINE products are also available with abrasion-resistant surfaces.

- › Mirror, metal and brushed designs
- › Fashionable colours
- › Problem-free printing
- › Many products supplied in a flame-retardant version
- › Available in self-adhesive, non-adhesive, and magnetic.





□ MS 5x5 flex Hollywood

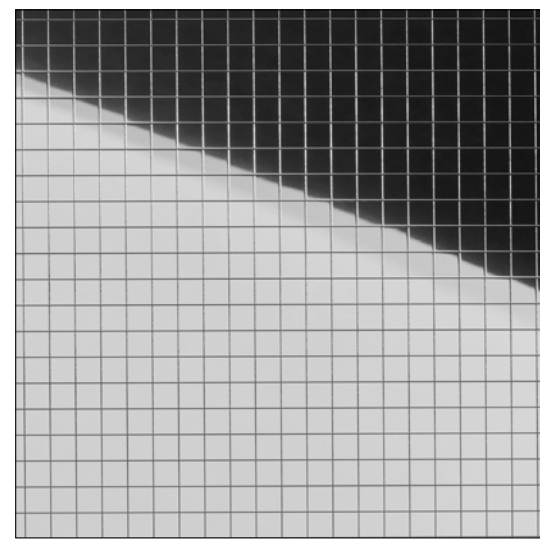


□ MS 20x20 flex Silver

MULTISTYLE



MS 5x5 flex Hollywood



MS 10x10 flex Silver

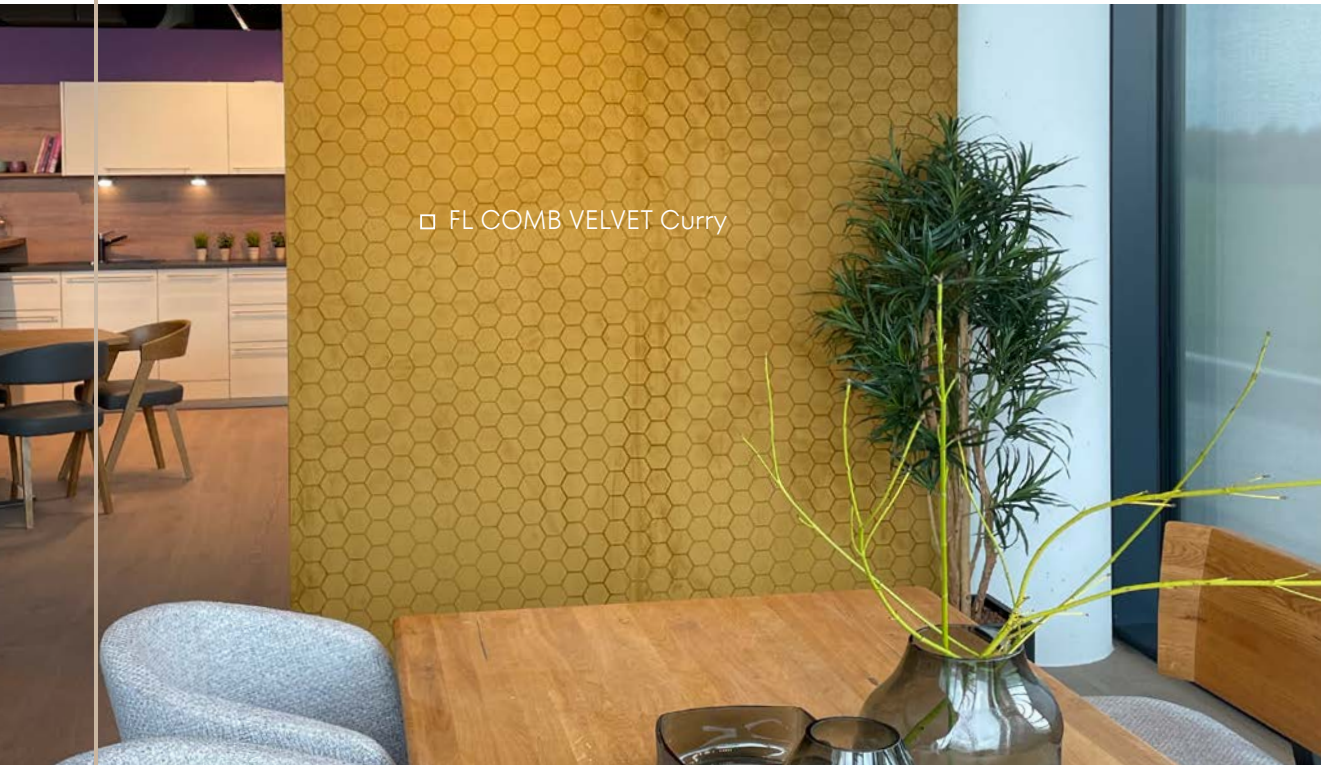
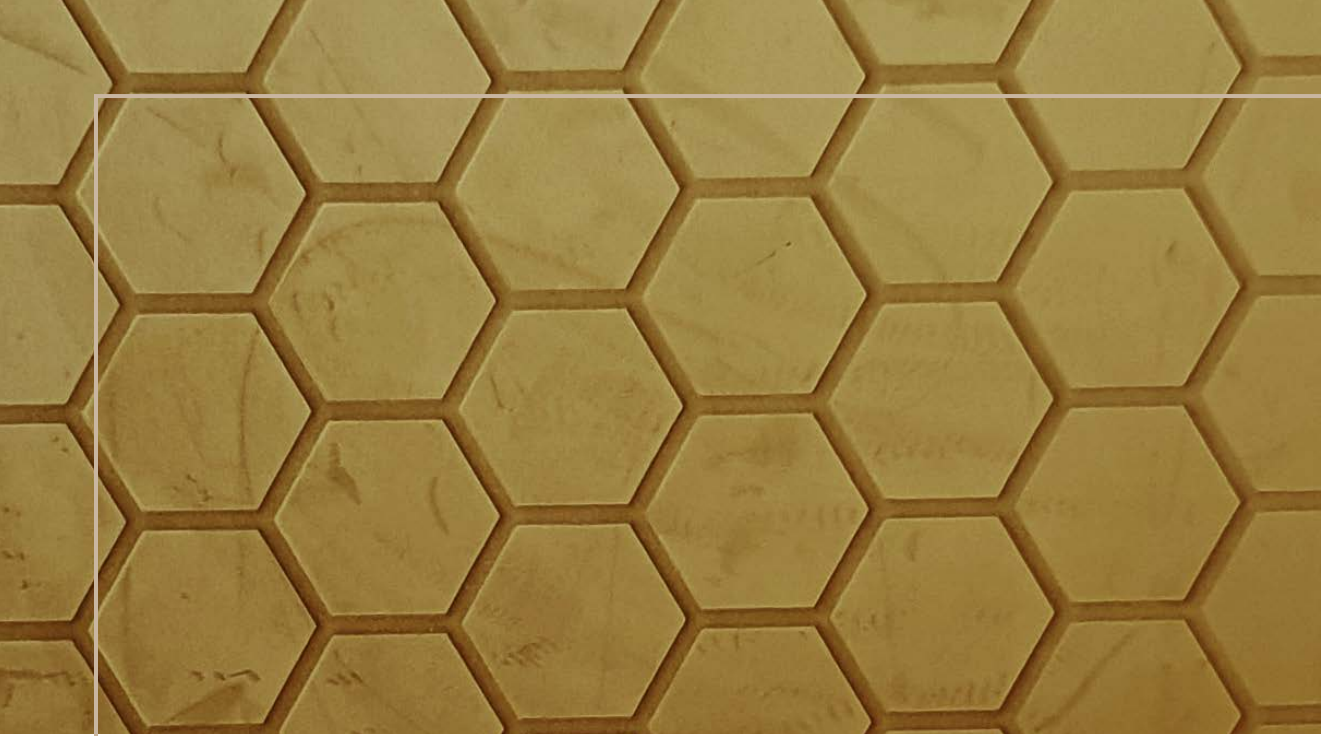


MULTI-STYLE

The MULTISTYLE programme consists of mirror and metallic top surfaces with a stylish mosaic appearance. MultiStyle products are characterised by their extreme flexibility. They can therefore be used in a highly individual manner and even be applied to curved surfaces without any problems.

MULTISTYLE is a must in the display and decoration area!

- Flexible mosaic mirrors
- Carvings
- Problem-free digital printing
- An absolute eye-catcher
- Ideal for rounded surfaces
- Also available in magnetic versions
- Standard format: 980x980mm, can also be supplied in a 2.600 x 1.000mm format!

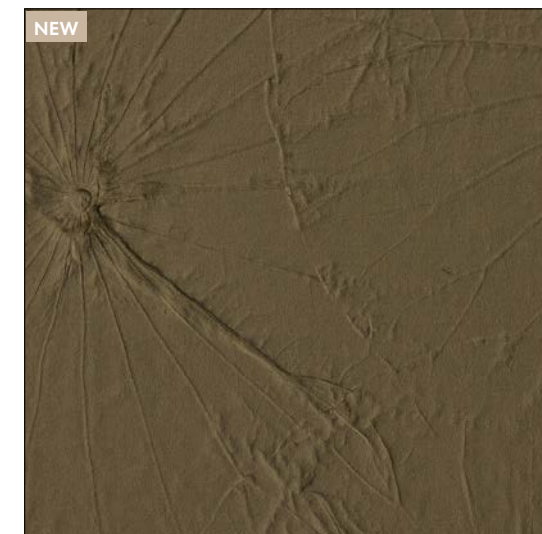


FL COMB VELVET Curry

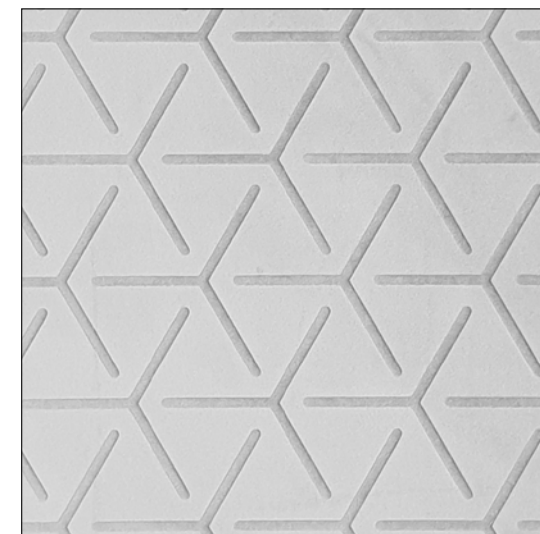


FL CREPA VELVET Pearl

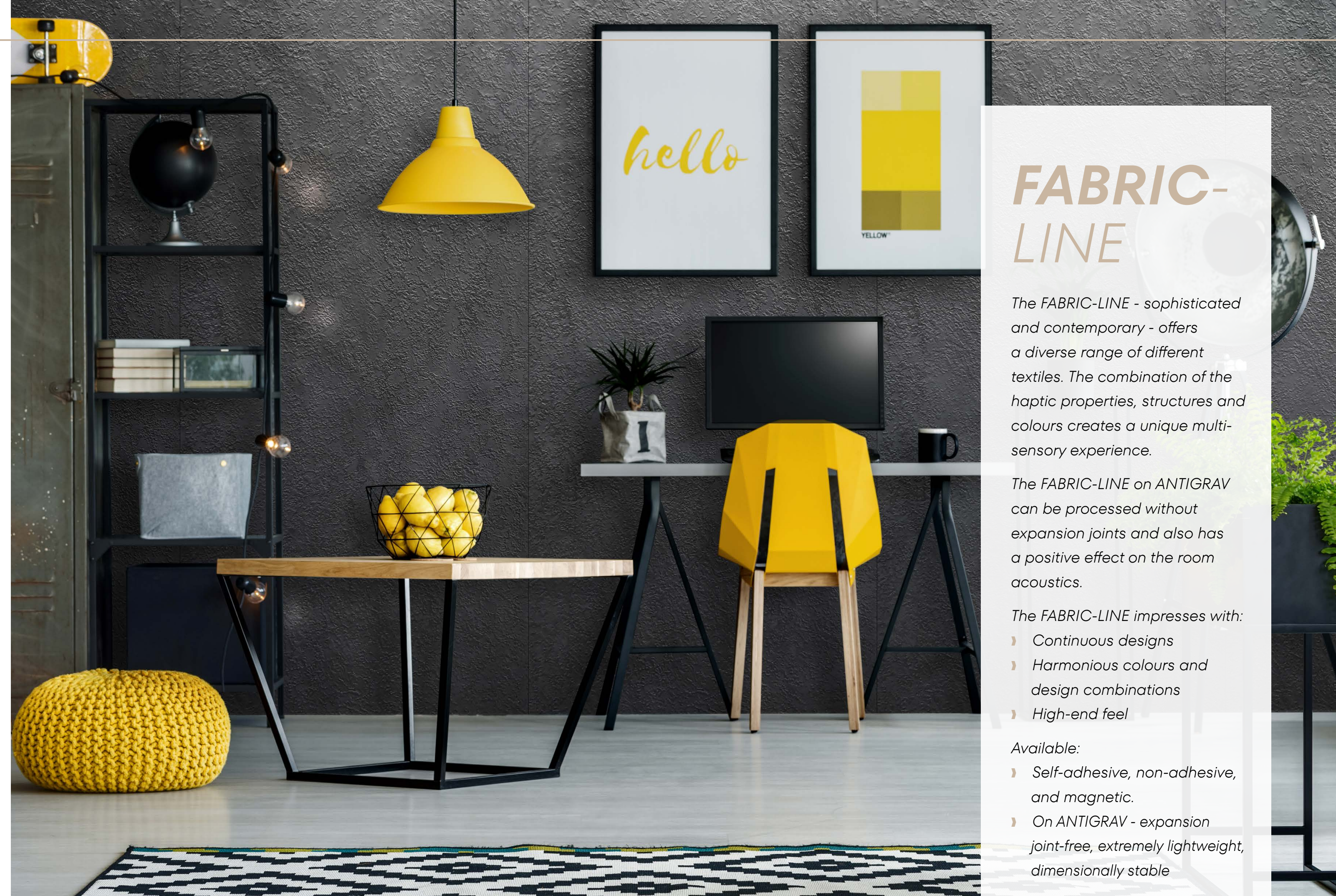
FABRIC-LINE



FL LOTUS VELVET Mocha



FL CUBE VELVET Pearl



FABRIC-LINE

The FABRIC-LINE - sophisticated and contemporary - offers a diverse range of different textiles. The combination of the haptic properties, structures and colours creates a unique multi-sensory experience.

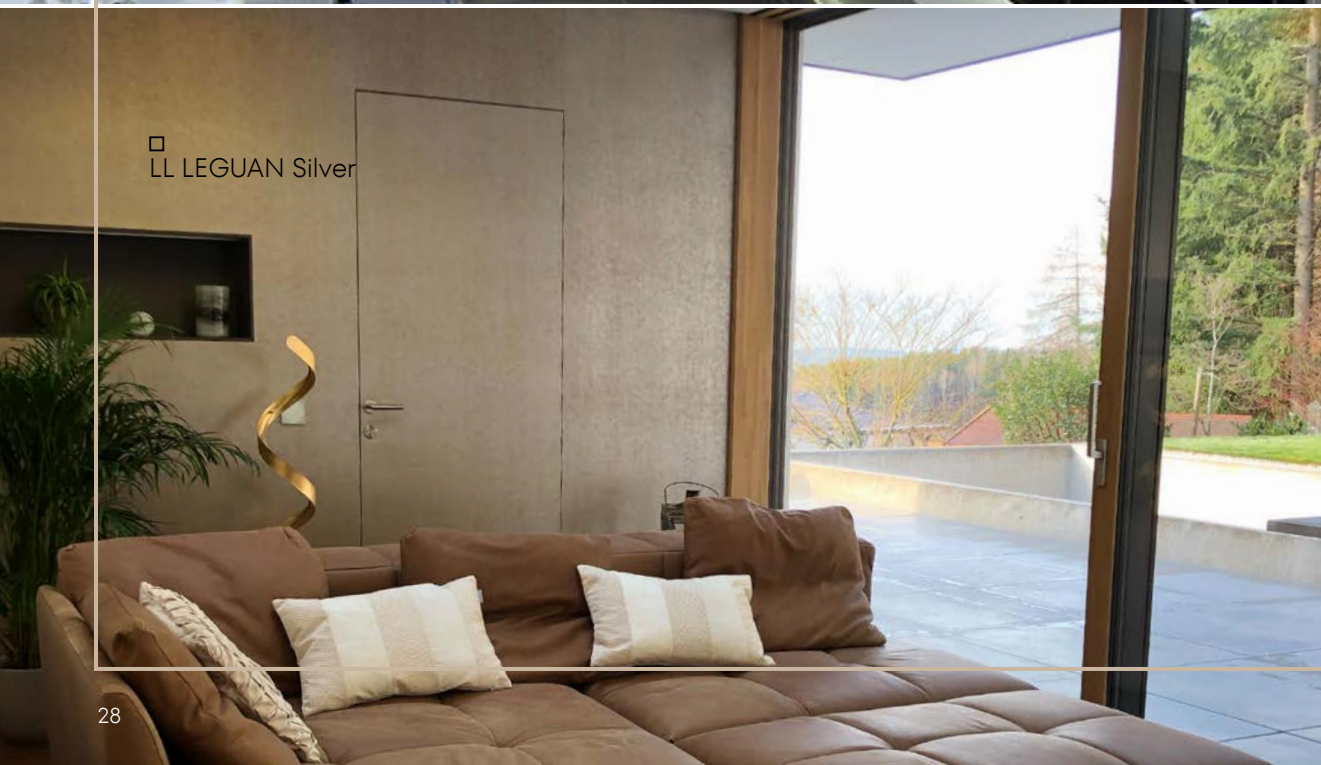
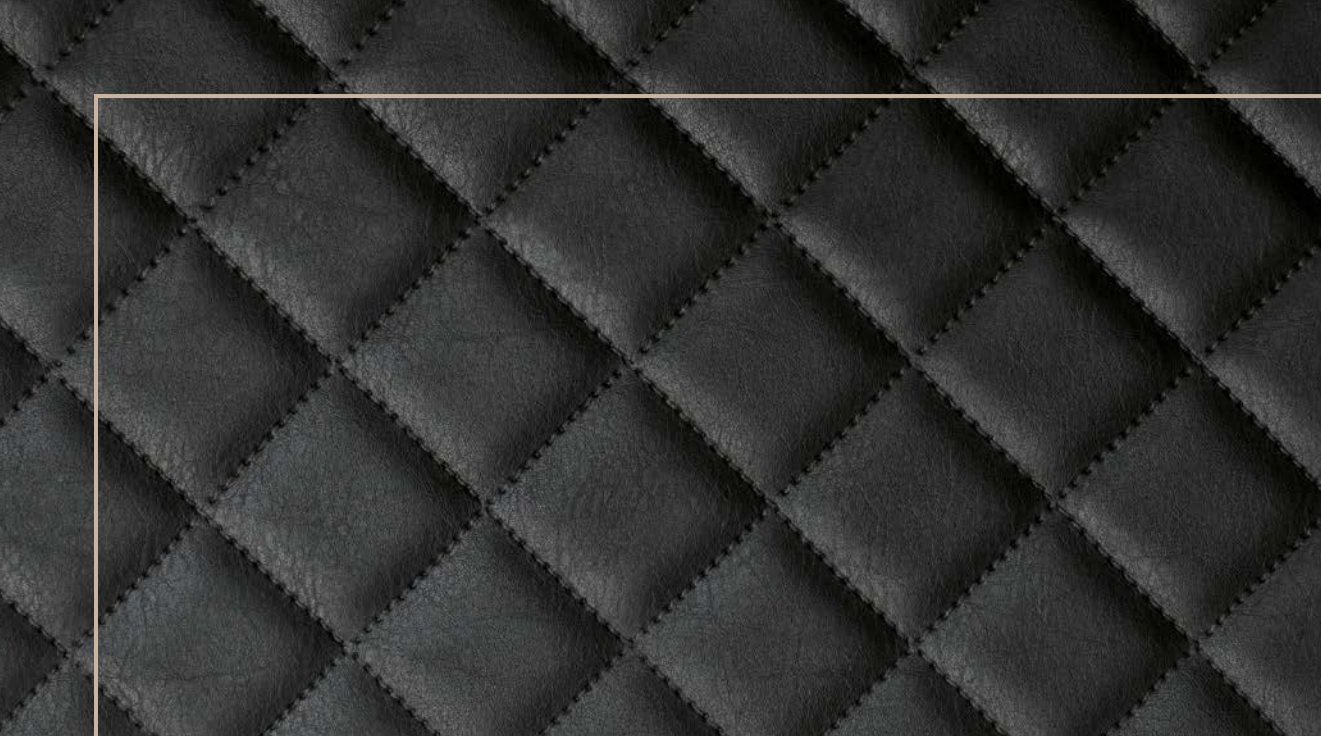
The FABRIC-LINE on ANTIGRAV can be processed without expansion joints and also has a positive effect on the room acoustics.

The FABRIC-LINE impresses with:

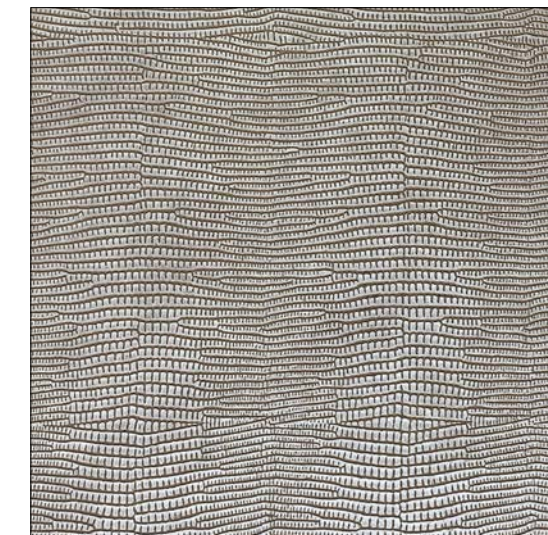
- › Continuous designs
- › Harmonious colours and design combinations
- › High-end feel

Available:

- › Self-adhesive, non-adhesive, and magnetic.
- › On ANTIGRAV - expansion joint-free, extremely lightweight, dimensionally stable



LEATHER-LINE



LL LEGUAN Silver



LL TARGET METALLIC USED Sand



LL LANE METALLIC USED Titan



LL BRIDGE METALLIC USED Steel



LEATHER-LINE

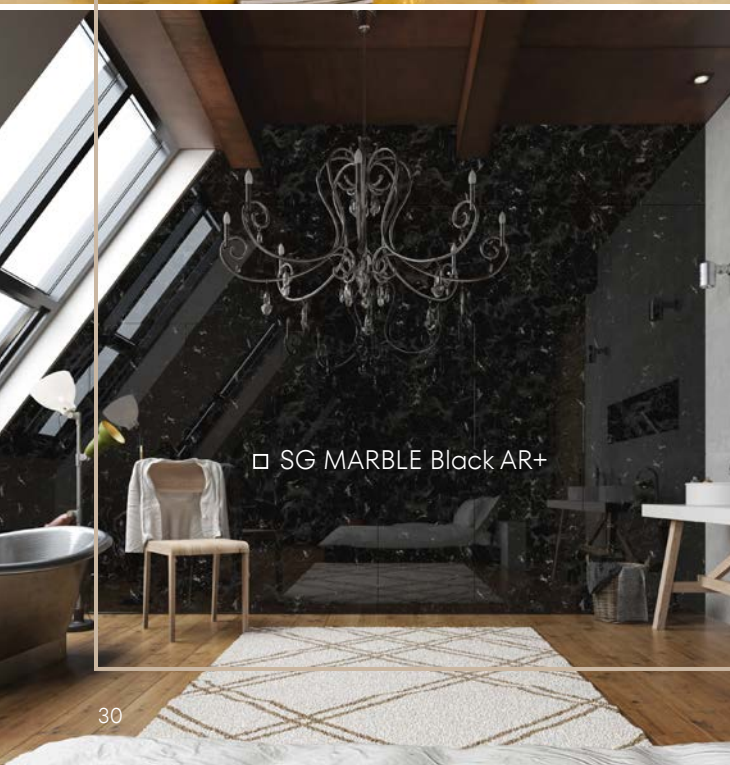
Exclusive leather grains, special decorative stitchings, exotic reptile decors - all of it strictly vegan!

Our unique synthetic leather surfaces outshine other products. LEATHER-LINE offers a diversity of designs and top surfaces in highly fashionable colours and all in PVC-free quality.

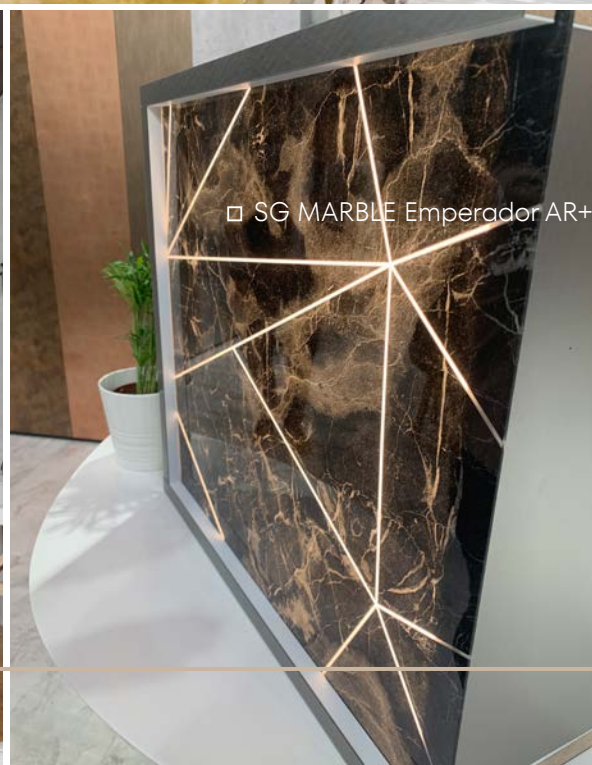
- › Vegan synthetic leather surfaces
- › Stylish designs and colours
- › High quality haptics
- › Smooth or structured decors
- › 100% PVC-free
- › Suitable for bonding with PVA
- › Available in self-adhesive, non-adhesive, and magnetic.



□ SG LUXURY Gold AR+



□ SG MARBLE Black AR+



□ SG MARBLE Emperador AR+

SIBUGLAS



SG MARBLE Emperador AR+



SG MARBLE Alpine AR+



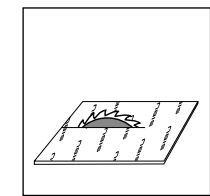
SIBUGLAS

Revolutionary depth effect with maximum abrasion resistance for unique design objects.

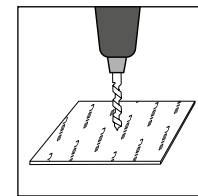
SIBUGLAS products are extremely abrasion-resistant (AR+).

- › Acrylic glass
- › High-gloss surfaces
- › Extreme depth effect
- › Abrasion-resistant
- › Available in self-adhesive, non-adhesive, and magnetic.

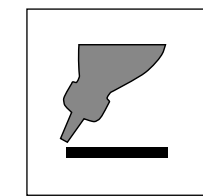
SIBUGLAS PROCESSING



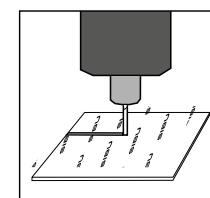
Sawing



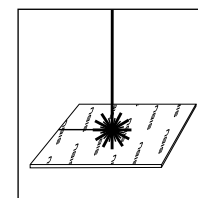
Drilling



Press bonding
PVA pretreatment



Milling



Laser cutting

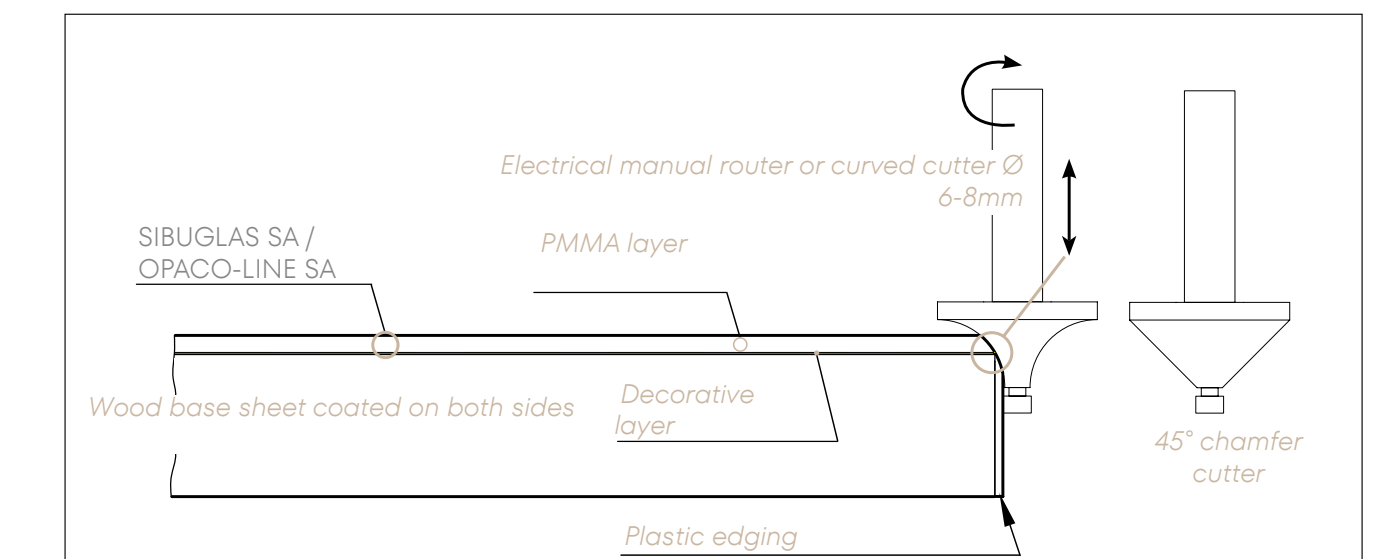
More detailed information can be found in our SIBU OVERVIEW and under: www.sibu.at/en/processing-of-sibuglas-opaco-line

SIBUGLAS / application as self-adhesive product

SIBUGLAS / press bonding

self-adhesive on wood based sheets

- Remove the adhesive cover and bond the sheet onto the wooden panel (rubber roller) - no balancing sheet necessary.
- Cut to the required dimensions and apply the edging.
- Using an electrical manual router, mill a rounded edge exactly up to the point of transition from the transparent PMMA layer to the structured layer.



DESCRIPTION – STRUCTURE

SIBUGLAS Designpanel

PVA white glue

Wood based sheet

*minimum thickness of 16 mm!
Use thicker wood based sheets for larger formats!*

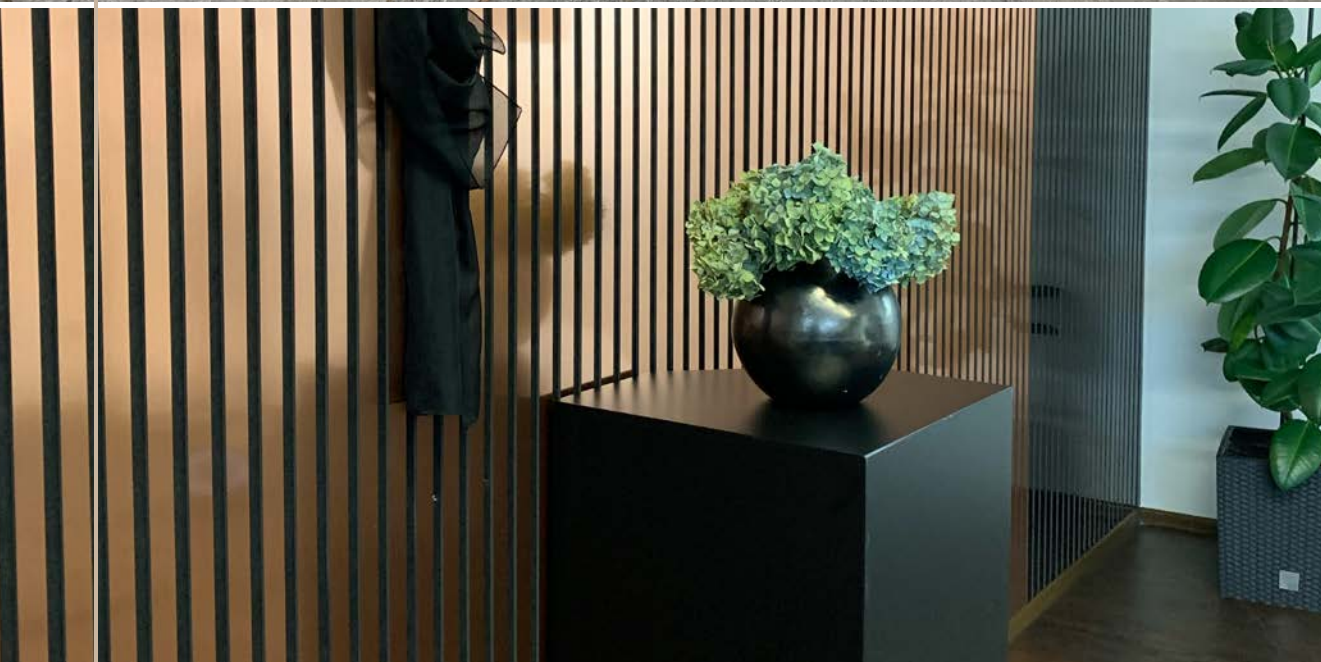
PVA white glue

Balancing sheet

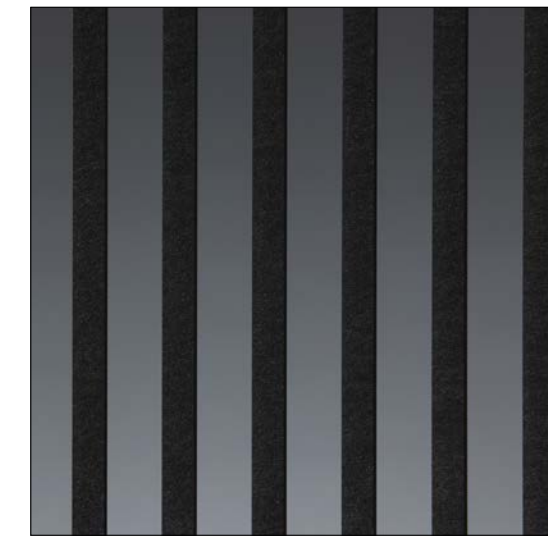


SIBUGLAS *pressed*

Both reverse sides (design and balancing sheet) are saturated with PVA white glue as evenly and quickly as possible using a roller. They are then laid on both sides of the absorbent wood based sheet and this composite is subsequently placed in a sheet press.



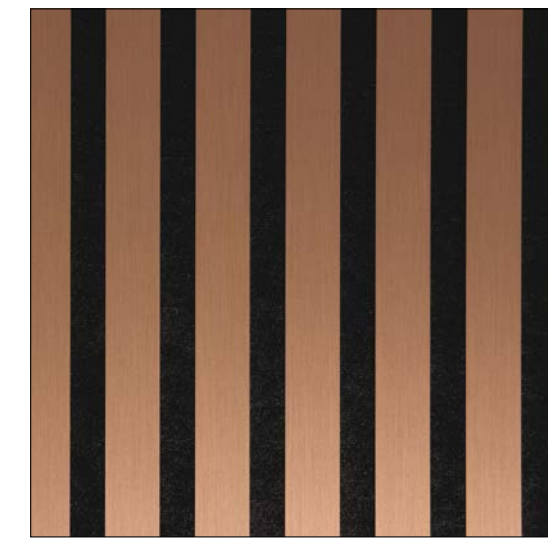
ACOUSTIC WALL PANELS



AP Fashion Grey AR



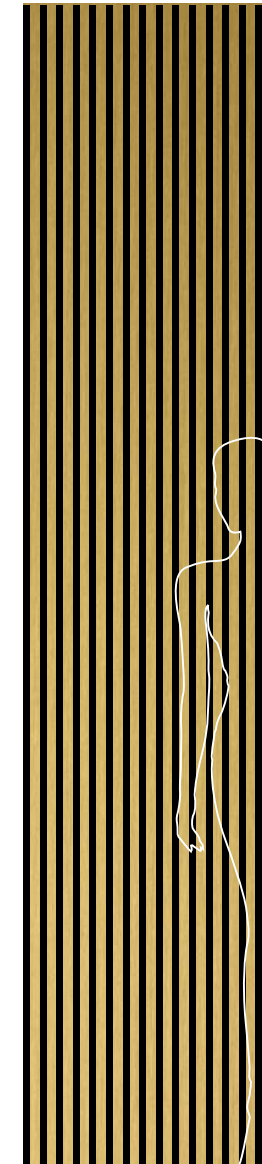
AP Fashion Gold AR



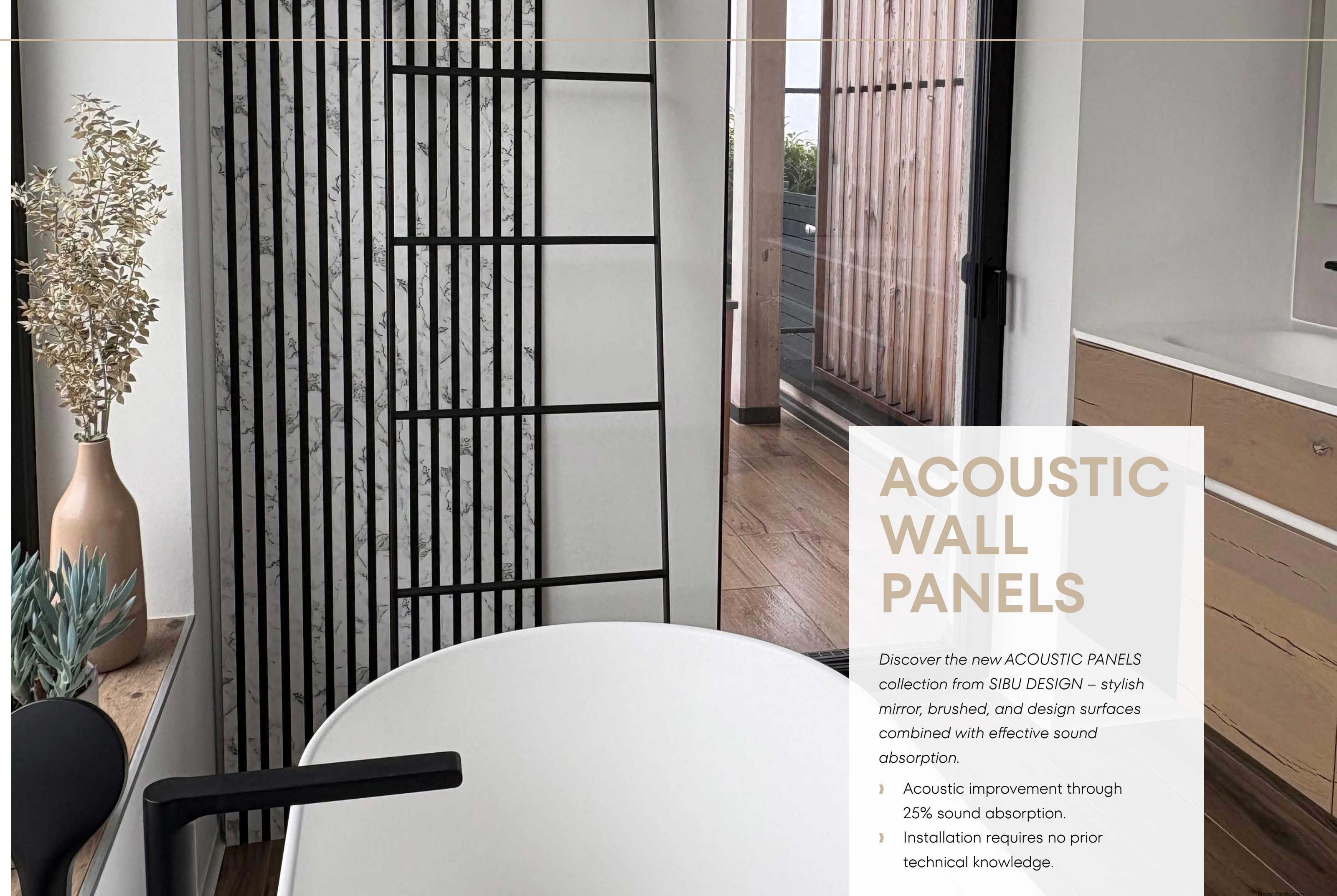
AP Copper brushed AR



AP MARBLE White



Format: 2800 x 600 mm

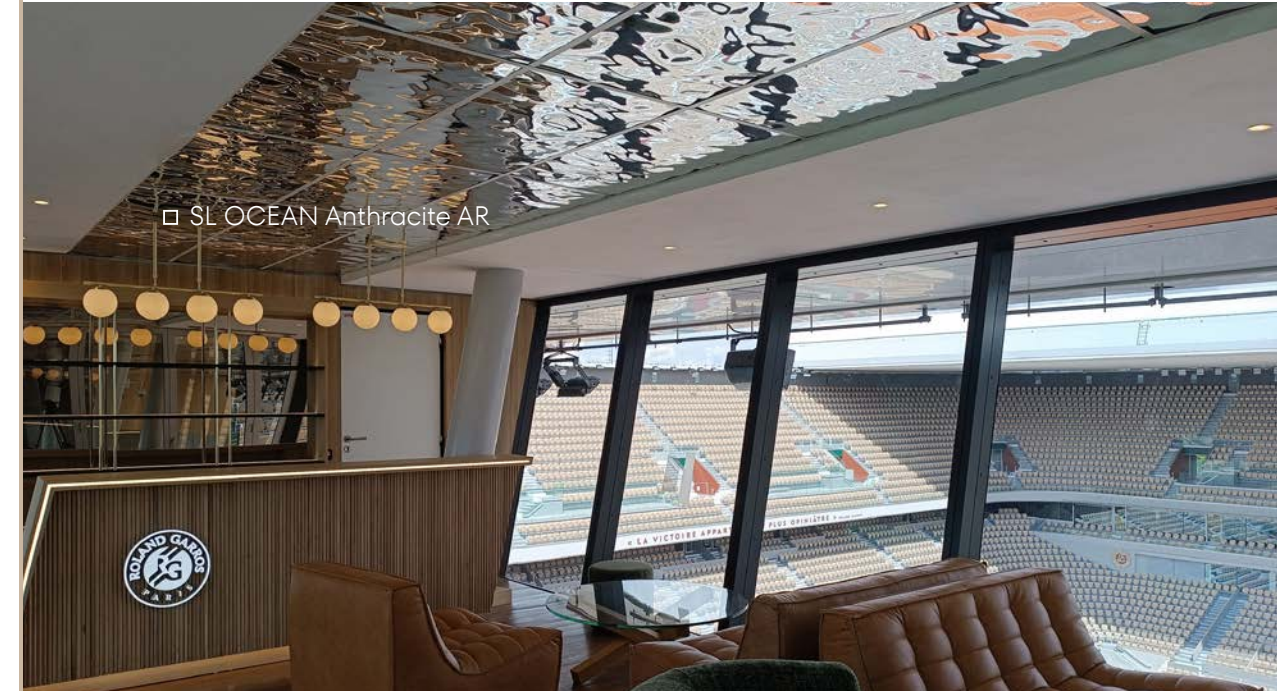


ACOUSTIC WALL PANELS

Discover the new ACOUSTIC PANELS collection from SIBU DESIGN – stylish mirror, brushed, and design surfaces combined with effective sound absorption.

- › Acoustic improvement through 25% sound absorption.
- › Installation requires no prior technical knowledge.

HOSPITALITY



SLIDING DOORS



EXHIBITION DESIGN



FURNITURE | KITCHENS



WALL DECORATION



SHOP FITTING



DM Silver brushed



SL OCEAN Silver



SHOPWINDOW | DISPLAY



ADVERTISING MATERIAL

The range of SIBU DESIGN sales documentation at a glance.

Immerse yourself in the world of
SIBU DESIGN.



OVERVIEW

Complete catalogue
PDF Version only

Product catalogs

with original samples

- › **About SIBU DESIGN**
- › **STRUCTURE-LINE** (extra *in addition*: SL OCEAN, SL FACET, SL DIAMOND, SL PILLAR)
- › **DECO-LINE DISPLAY**
- › **DECO-LINE DECORATION**
- › **MULTISTYLE**
- › **FABRIC-LINE**
- › **NATURE-LINE**
- › **LEATHER-LINE**
- › **SIBUGLAS**
- › **OPTICAL MIRROR**
- › **ACOUSTIC WALL PANELS**

SIBU Box

incl. samples from the SIBU DESIGN stock range

SIBU World

Overall presentation



You can find more detailed information in our **SIBU OVERVIEW** and on our website



OVERVIEW
Complete catalogue



 **sadun**

Via Wagner, 193
20831 Seregno MB

Tel . 0362 23341
sadun.it